

**agama**

[www.agama-rc.com](http://www.agama-rc.com)

# A215



***Instruction Manual***

***1/8 SCALE 4WD  
NITRO OFFROAD TRUGGY***

Agama vehicles fit a wide range of skilled drivers. Pros and Beginners alike can experience Agama products with great results!  
Agama products are designed with quality and precision in mind.

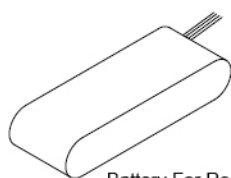
Made in Taiwan

<b>INTRODUCTION</b>	<b>01</b>
<b>CAUTION</b>	<b>02</b>
<b>BAG A</b> Front / Rear / Center Diff. Installation	<b>03-05</b>
<b>BAG B</b> Shock Install (Front & Rear)	<b>06-07</b>
<b>BAG C</b> Front Spindle & CVD Installation	<b>08</b>
<b>BAG D</b> Front End Installation	<b>09-12</b>
<b>BAG E</b> Rear Hub & CVD Installation	<b>13</b>
<b>BAG F</b> Rear End Installation	<b>14-17</b>
<b>BAG G</b> Center Diff. / Brake Installation	<b>18-19</b>
<b>BAG H</b> Switch / Antenna tube Installation	<b>20</b>
<b>BAG I</b> Clutch bell / Engine mount Assembly	<b>21-22</b>
<b>BAG J</b> Servo Saver / Steering Assembly	<b>23-24</b>
<b>BAG K</b> Stone Guard Installation	<b>25</b>
<b>BAG L</b> Throttle / Brake Assembly	<b>26</b>
<b>BAG M</b> Air Filter Assembly	<b>27</b>
<b>CHASSIS INSTALLATION</b>	<b>28-34</b>
<b>FACTORY SETUP SHEET</b>	<b>35-38</b>

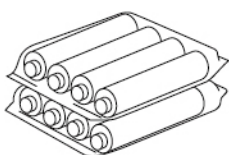


**Notice:** The following items are needed for completion of the PRO KIT, They are not included with this kit (unless noted), and should be obtained from your local hobby shop.  
**Be sure to read the instructions completely prior to assembly.**

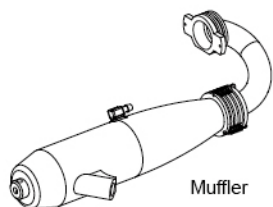
## ADDITIONAL ITEMS NEEDED FOR COMPLETION



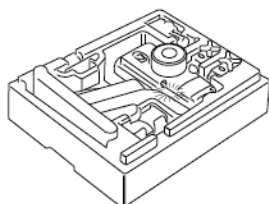
Battery For Receiver



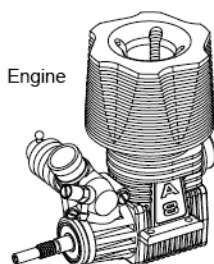
Battery For Transmitter



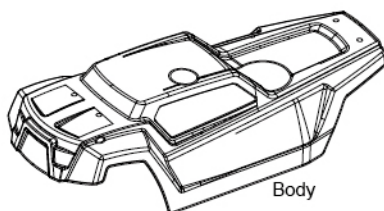
Muffler



2 Channel Radio



Engine

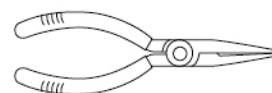


Body

## TOOLS NEEDED TO ASSEMBLE



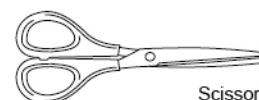
Hex Wrenches



Needle Nose Pliers



Phillips Type Screw Driver



Scissors



Box Wrench(5.5mm / 7mm / 10mm)



Hobby Knife



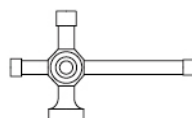
Instant Glue



Pliers



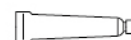
Screw (Sement)



Utility Wrench

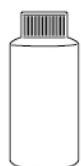


Glass or Vinyl Tape



Rubber Glue

## ADDITIONAL ITEMS NEEDED FOR STARTING



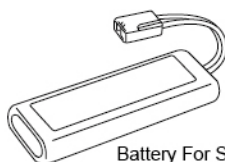
Air Filter Oil



Fuel Pump



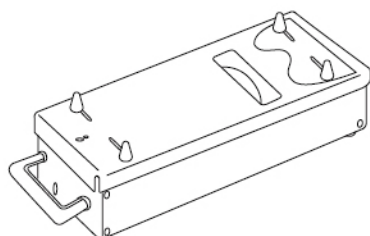
Fuel



Battery For Starter Box

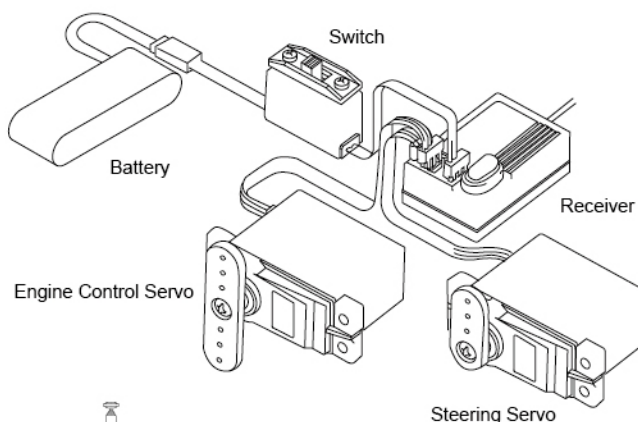


Glow Plug Ignitor



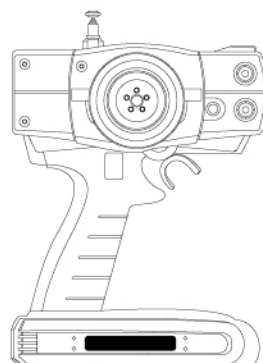
Starter Box

## ITEMS NEEDED TO CONTROL CAR



Engine Control Servo

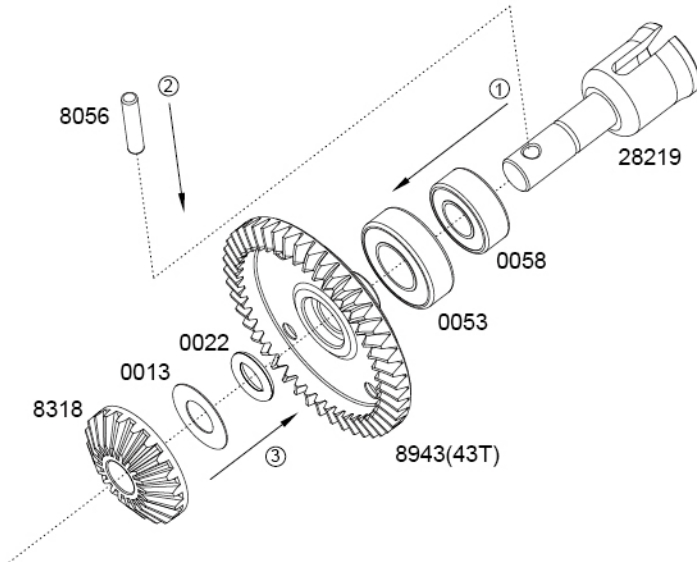
Steering Servo



Transmitter

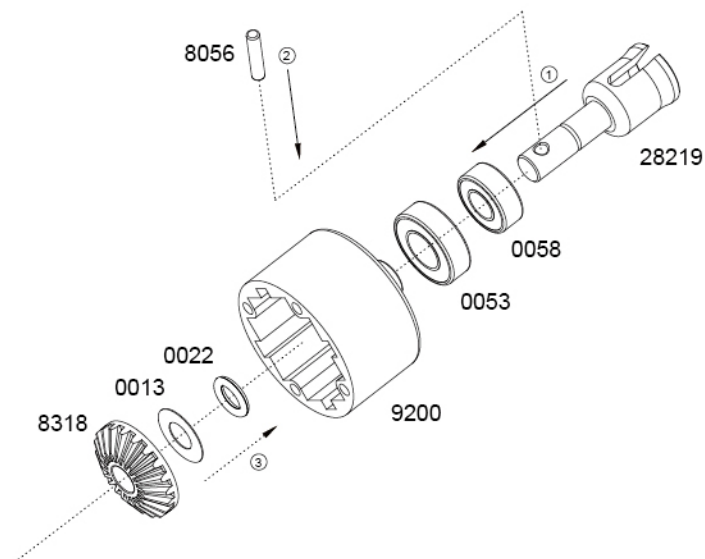
## STEP A - 1

### Front Diff Ring Gear Assembly



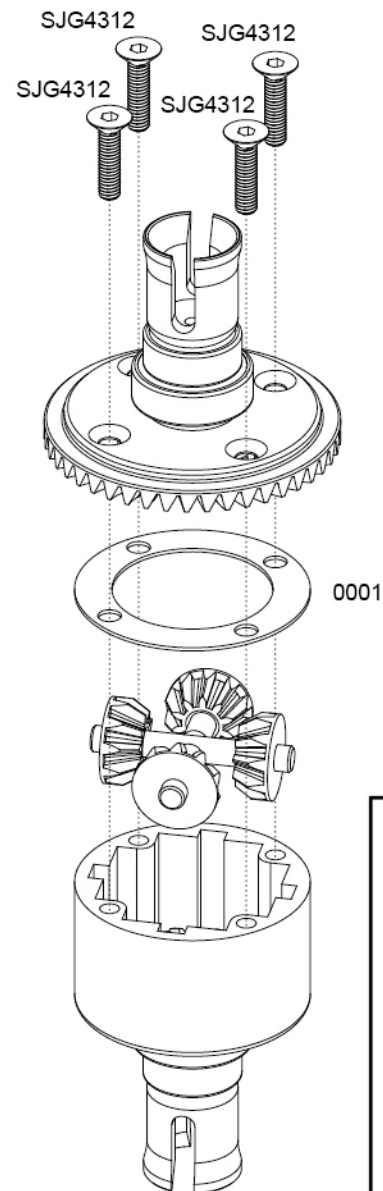
## STEP A - 2

### Front Diff Case Assembly

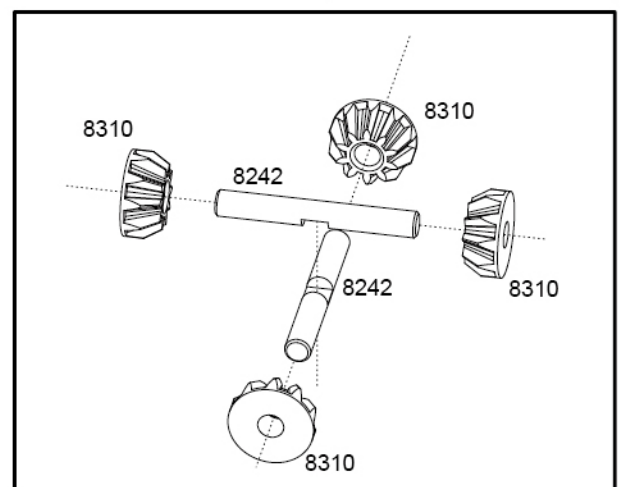
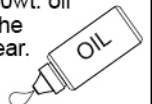


## STEP A - 3

### Complete Front Diff Assembly



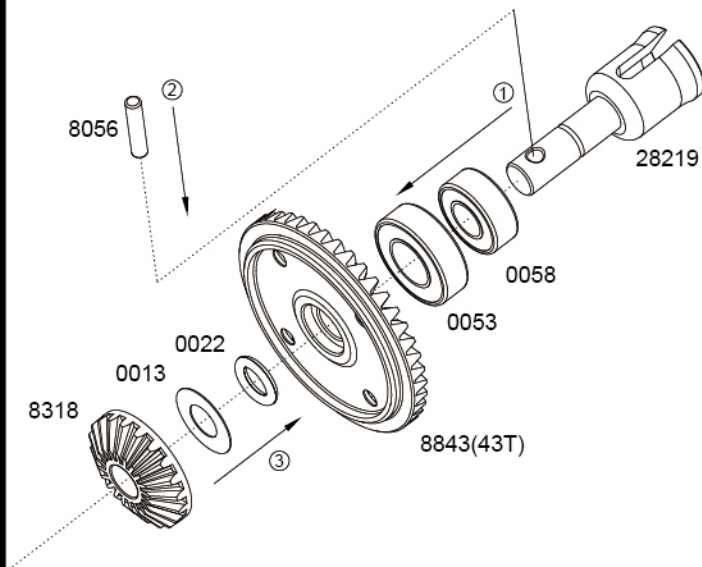
Fill with 7000wt. oil just above the planetary gear.





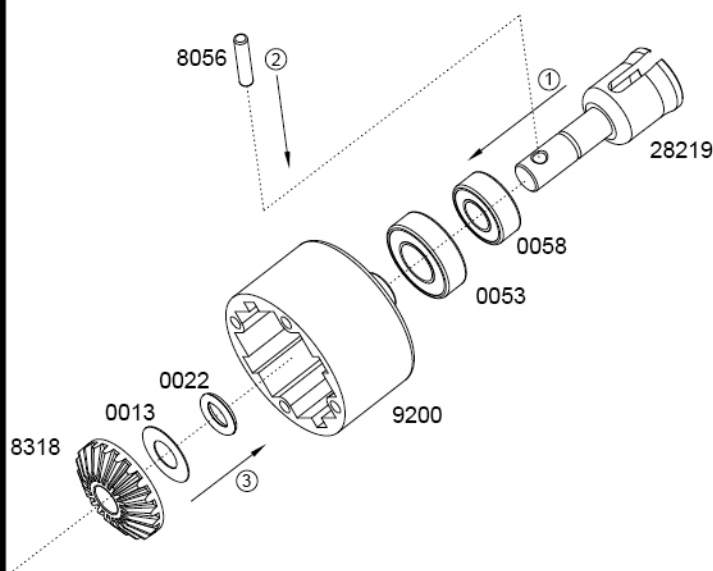
## STEP A - 4

### Rear Diff Ring Gear Assembly



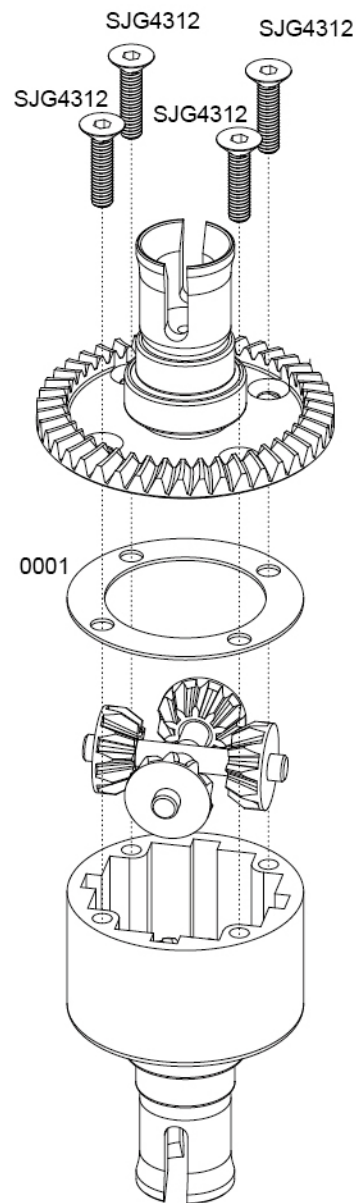
## STEP A - 5

### Rear Diff Case Assembly

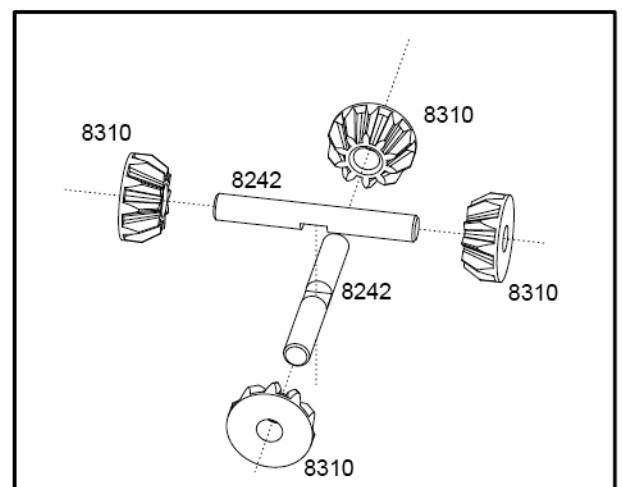
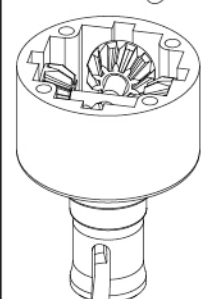
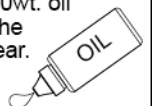


## STEP A - 6

### Complete Rear Diff Assembly

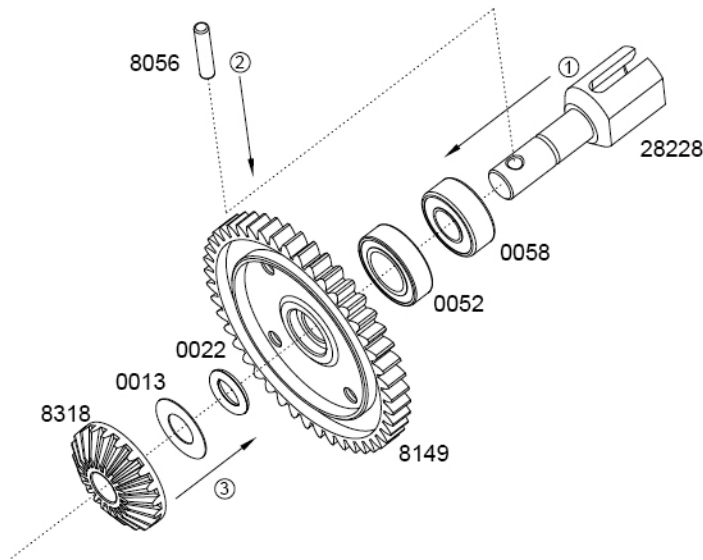


Fill with 3000wt. oil just above the planetary gear.



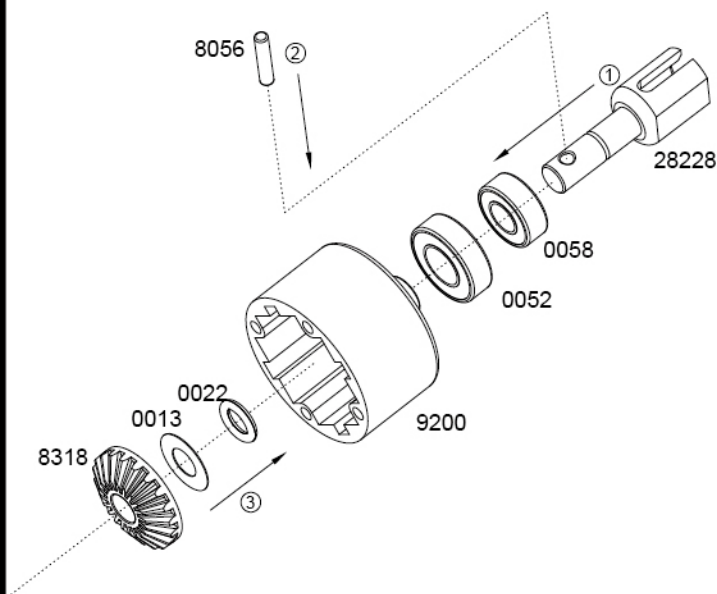
## STEP A - 7

### Center Diff Ring Gear Assembly



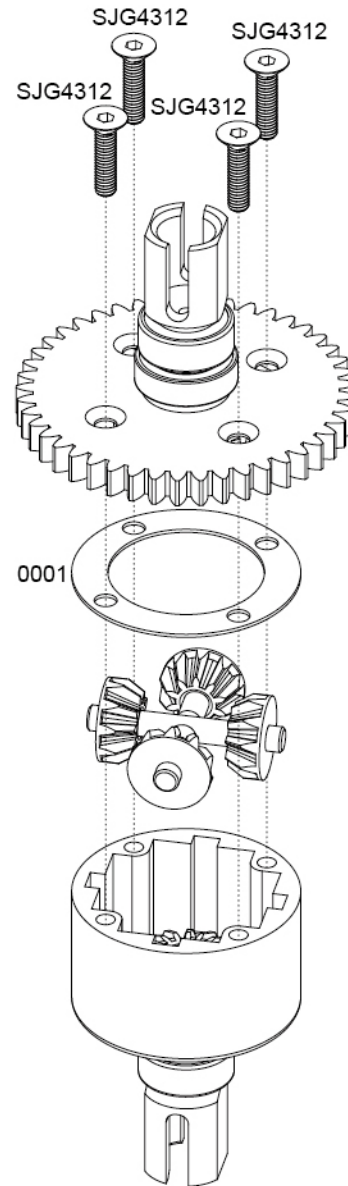
## STEP A - 8

### Center Diff Case Assembly

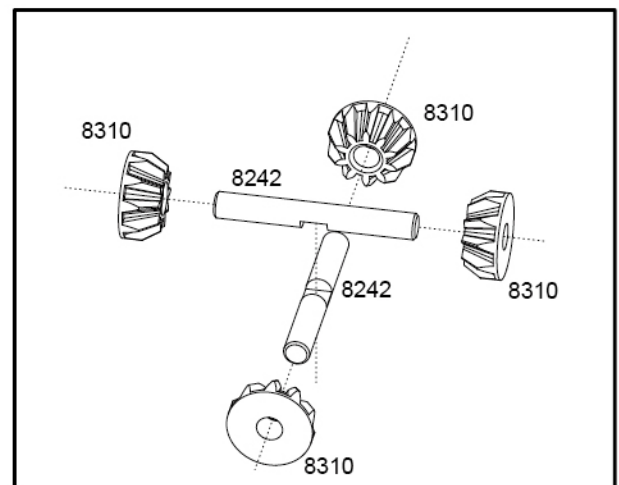
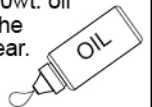


## STEP A - 9

### Complete Center Diff Assembly

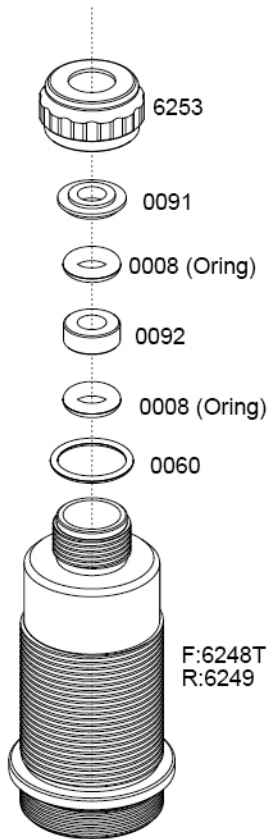


Fill with 7000wt. oil  
just above the  
planetary gear.



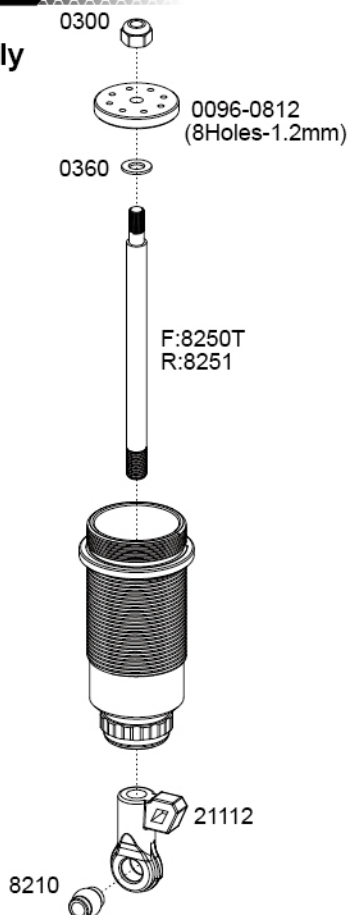
## STEP B - 1

### Shock Assembly (Front & Rear)



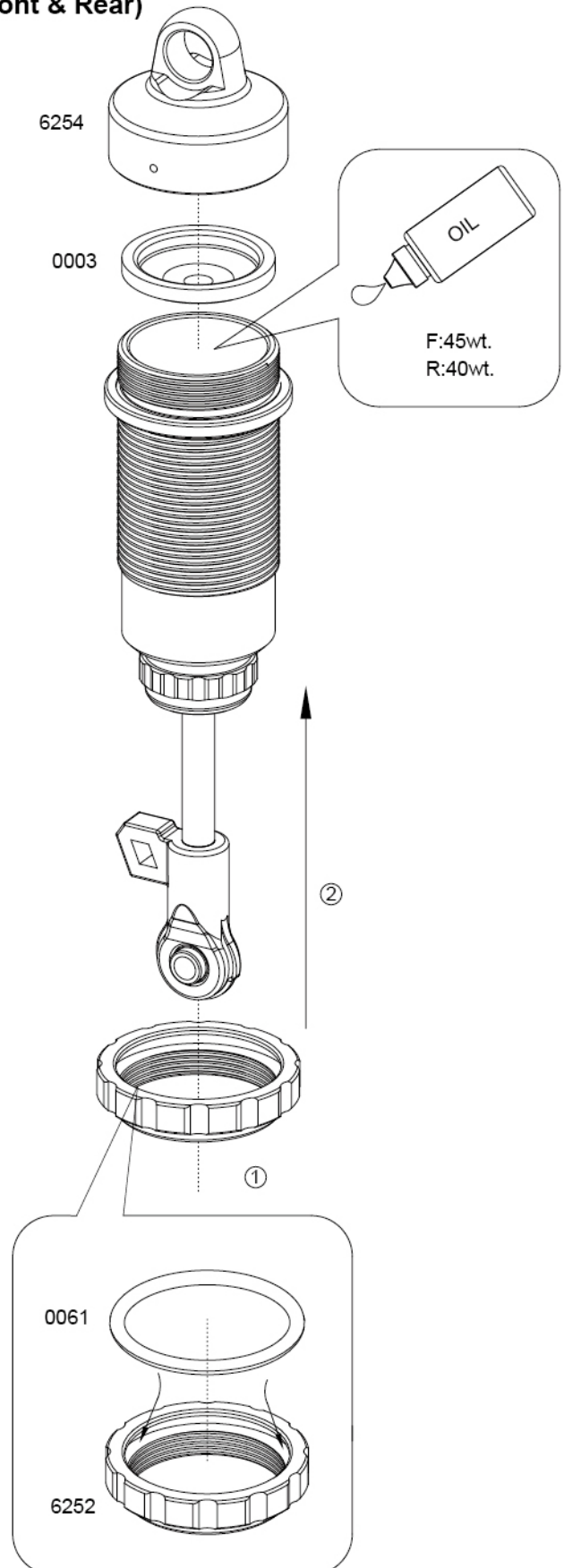
## STEP B - 2

### Shock Assembly (Front & Rear)



## STEP B - 3

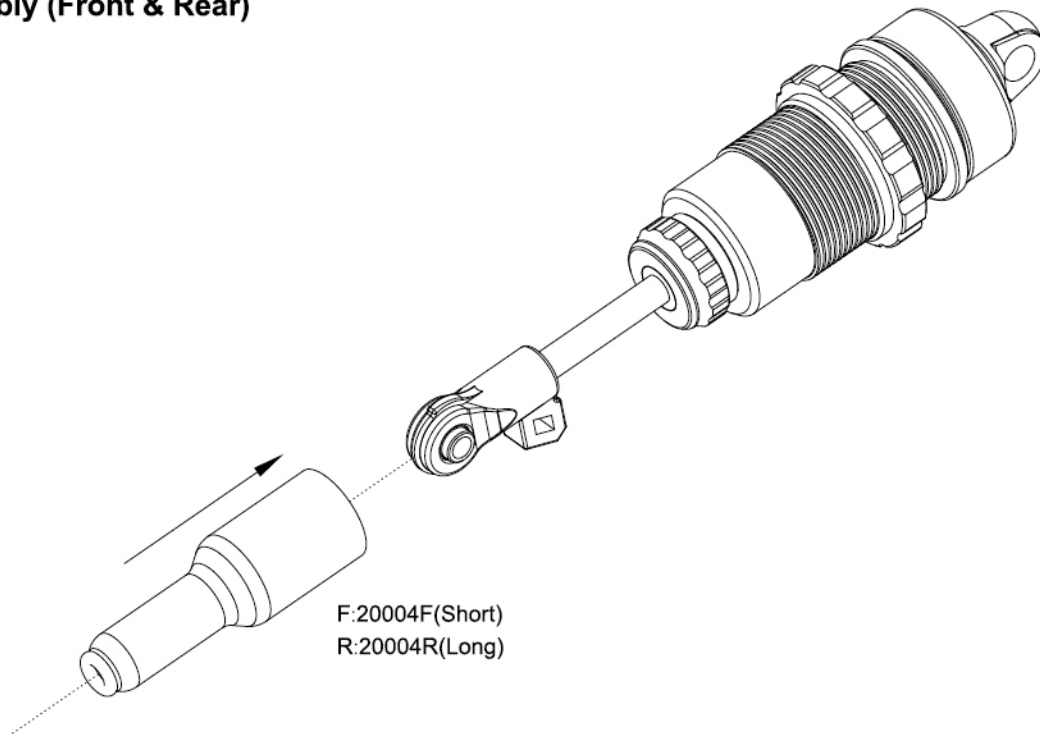
### Shock Assembly (Front & Rear)





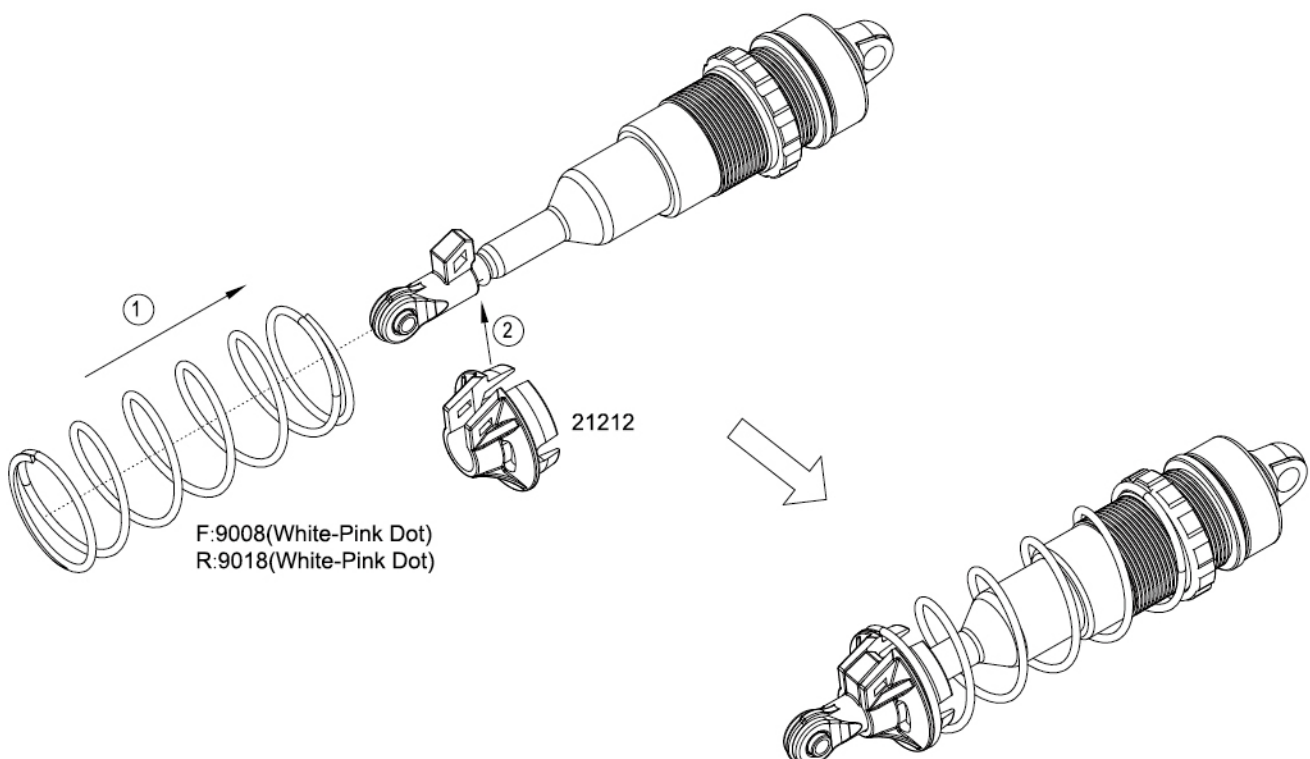
## STEP B - 4

### Shock Assembly (Front & Rear)



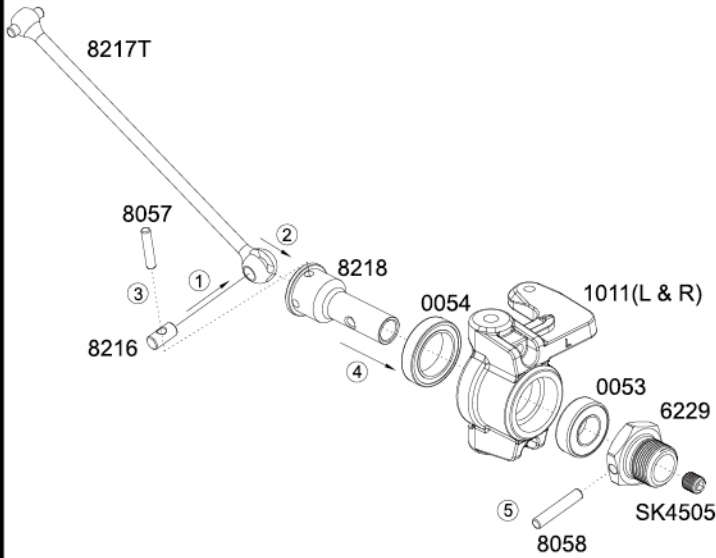
## STEP B - 5

### Shock Assembly (Front & Rear)



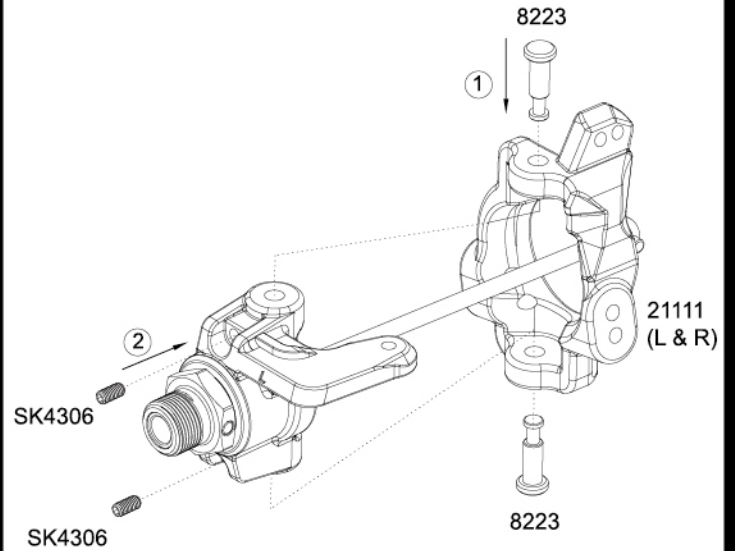
## STEP C - 1

### Front Spindle & CVD Assembly (Left/Right)



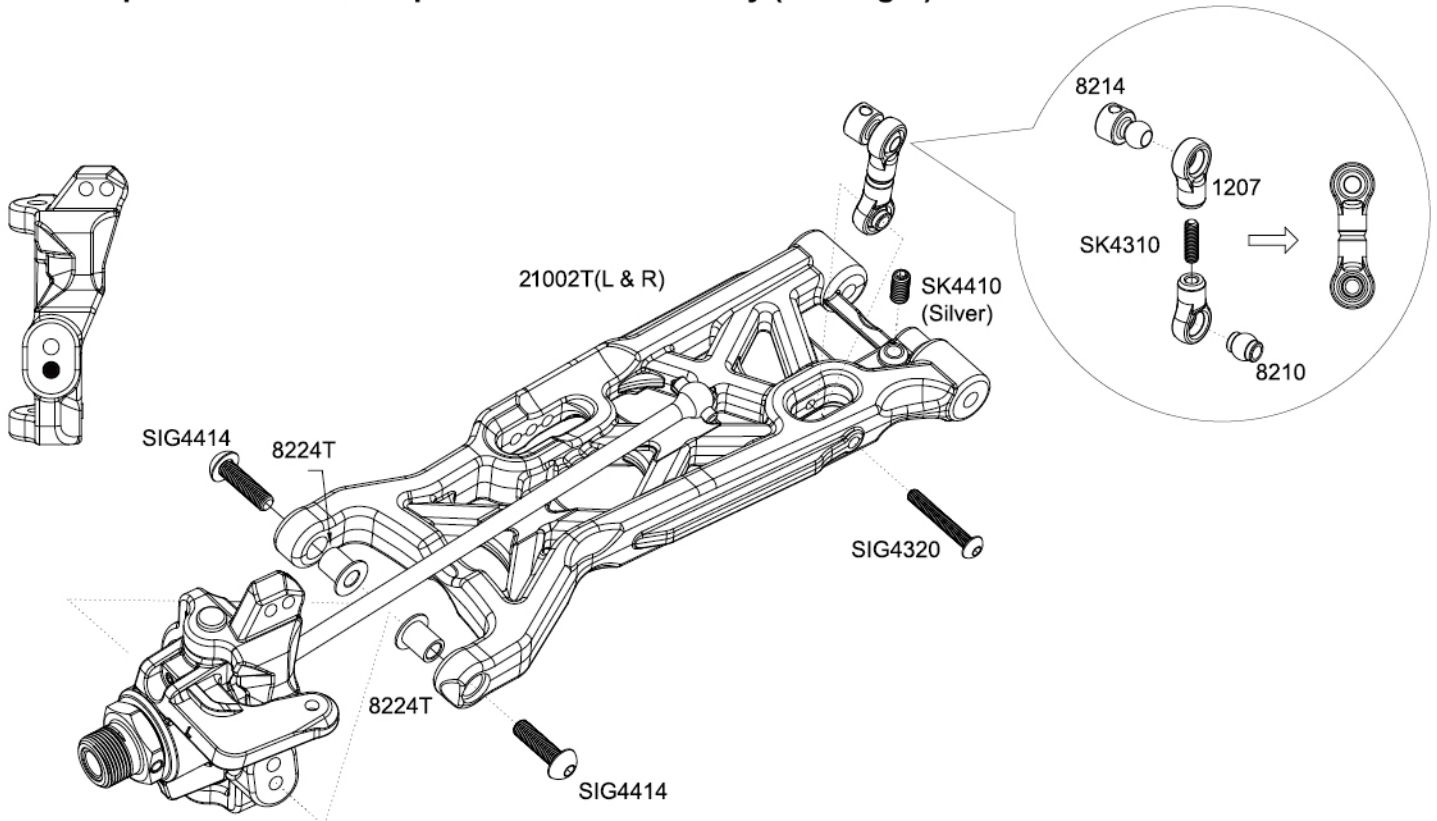
## STEP C - 2

### Front Spindle & Carrier Assembly (Left/Right)



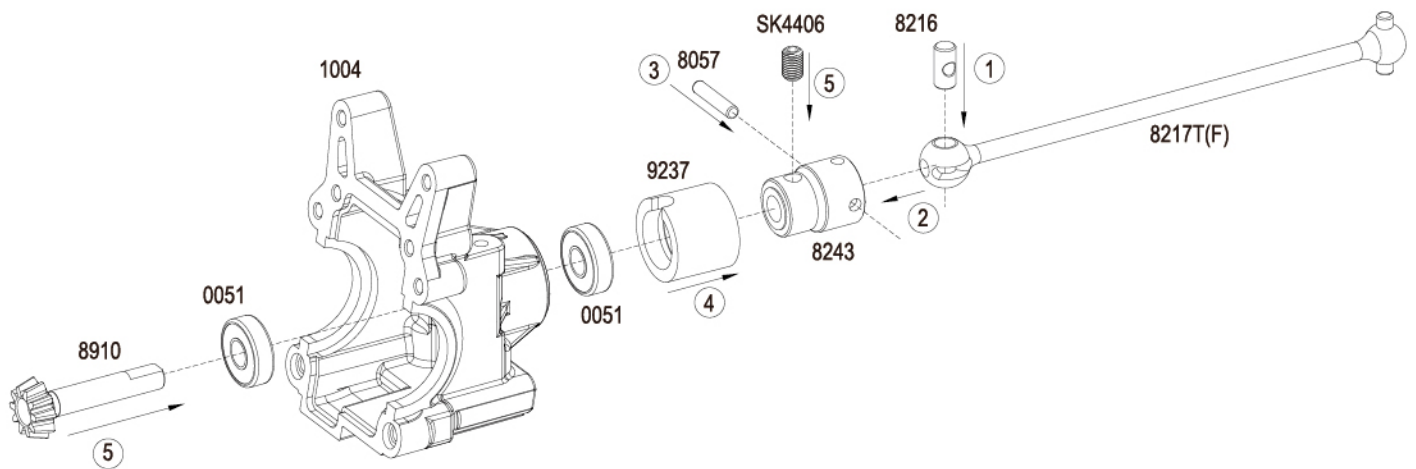
## STEP C - 3

### Front Spindle/Carrier & Suspension Arms Assembly (Left/Right)



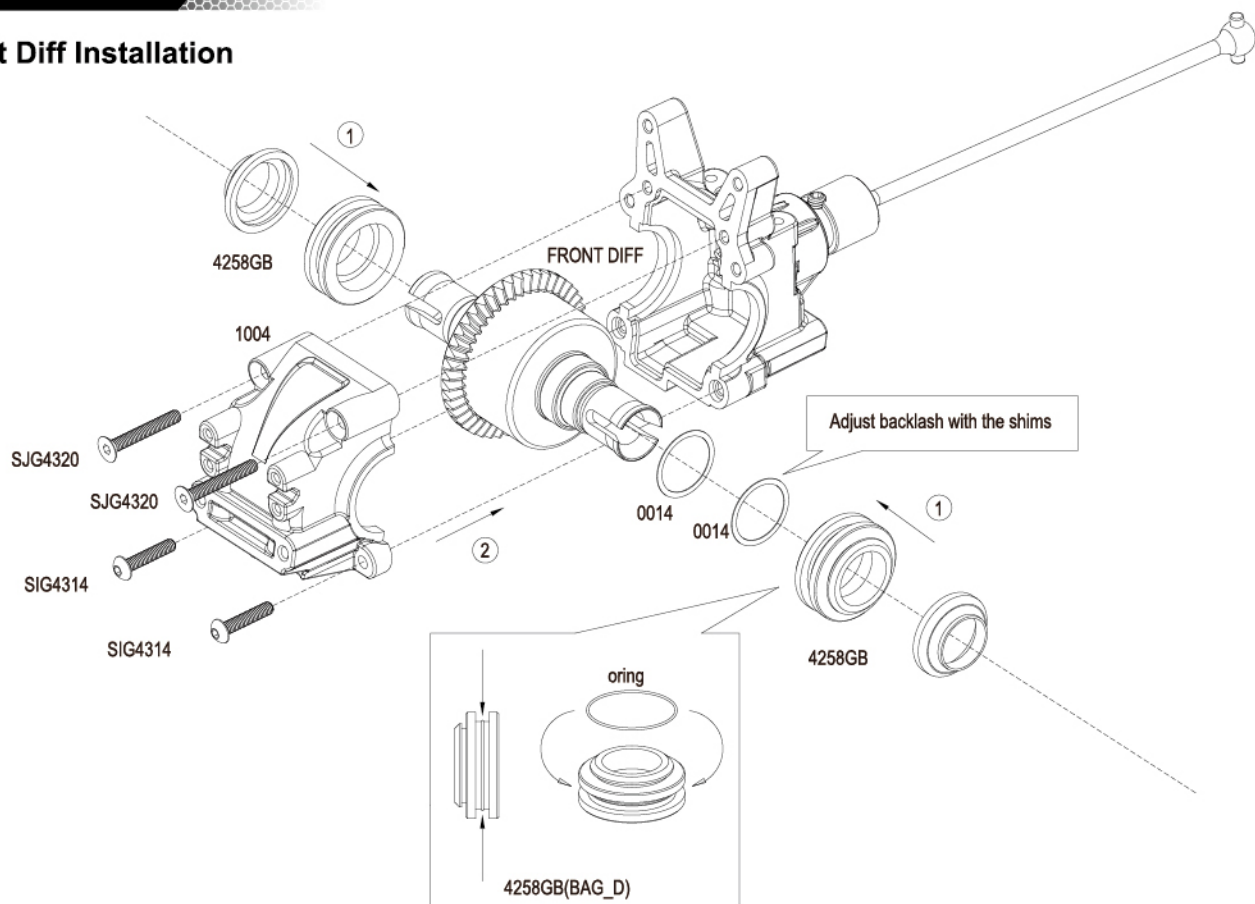
## STEP D - 1

## Front Diff Case & CVD Assembly



## STEP D - 2

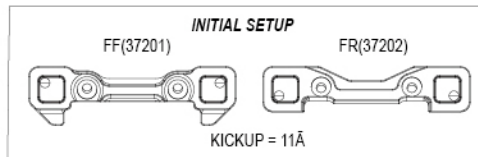
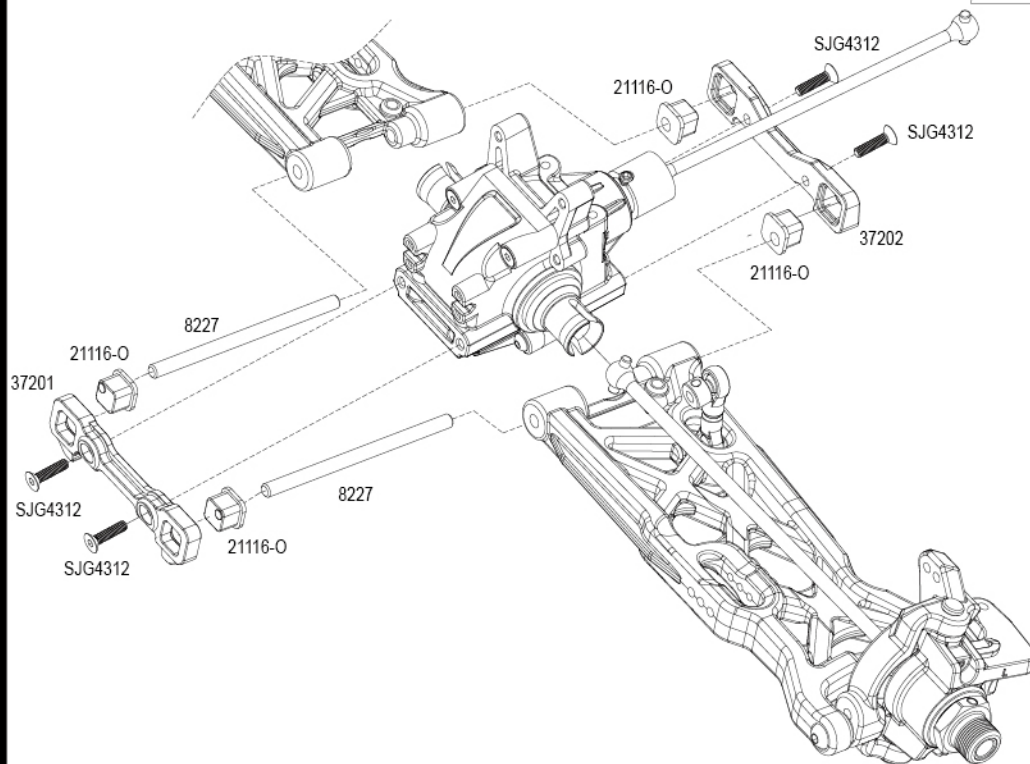
## Front Diff Installation



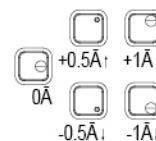


## STEP D - 3

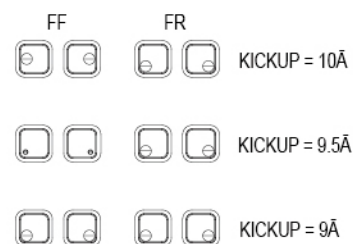
### Front Suspension Arm Assembly



### FRONT SUSPENSION KICKUP INSERTS CHART

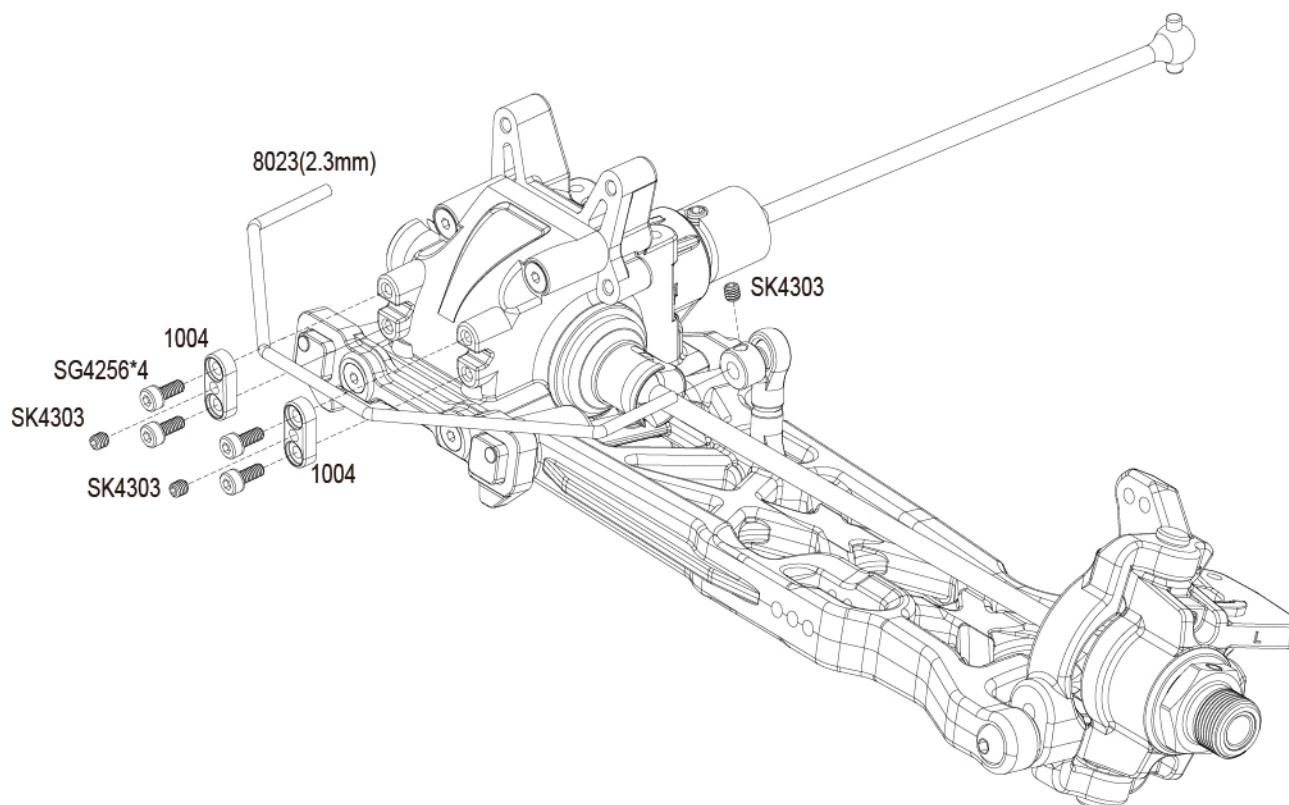


### OTHER SETTING EXAMPLES



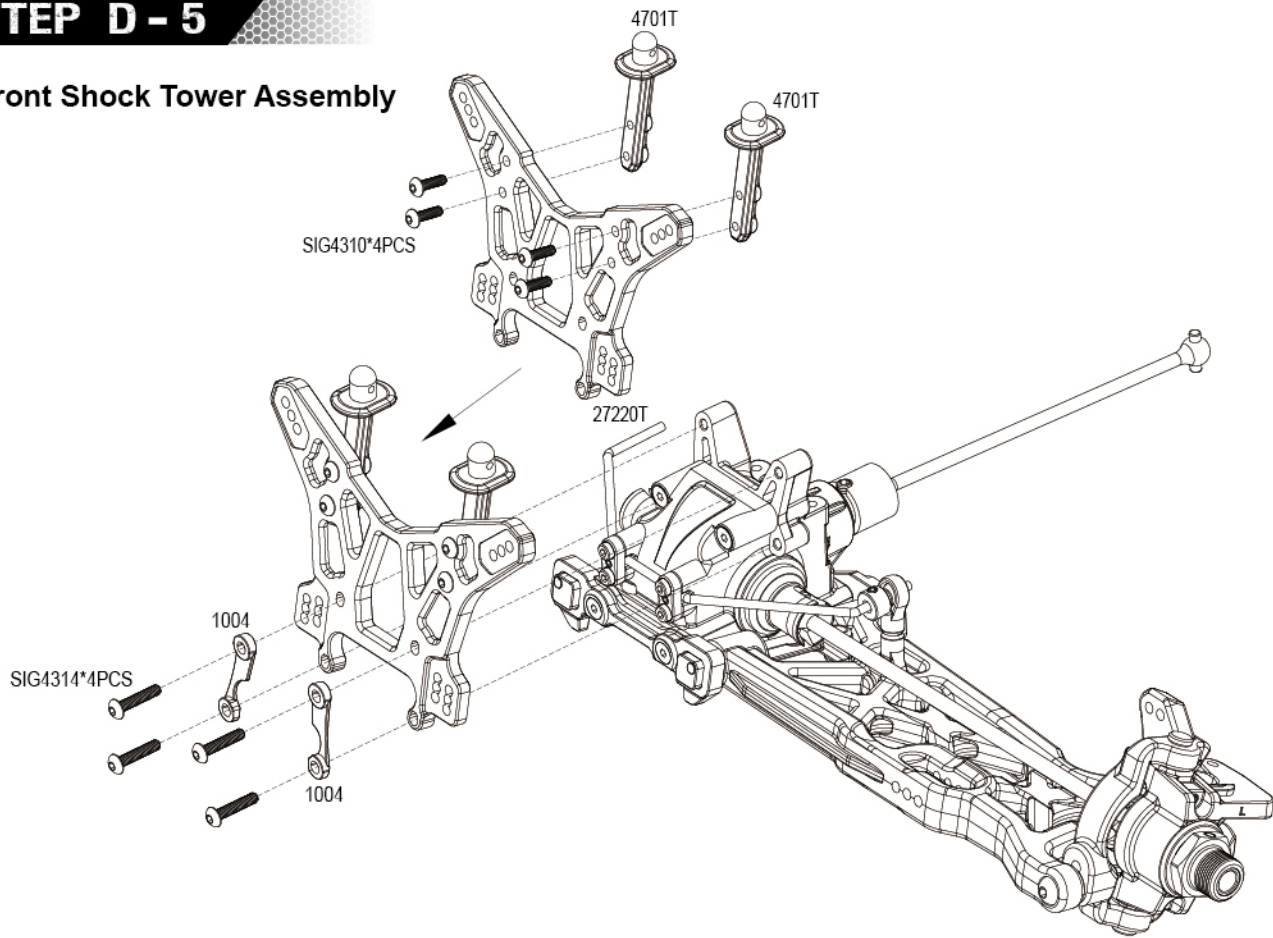
## STEP D - 4

### Front Swaybar Assembly



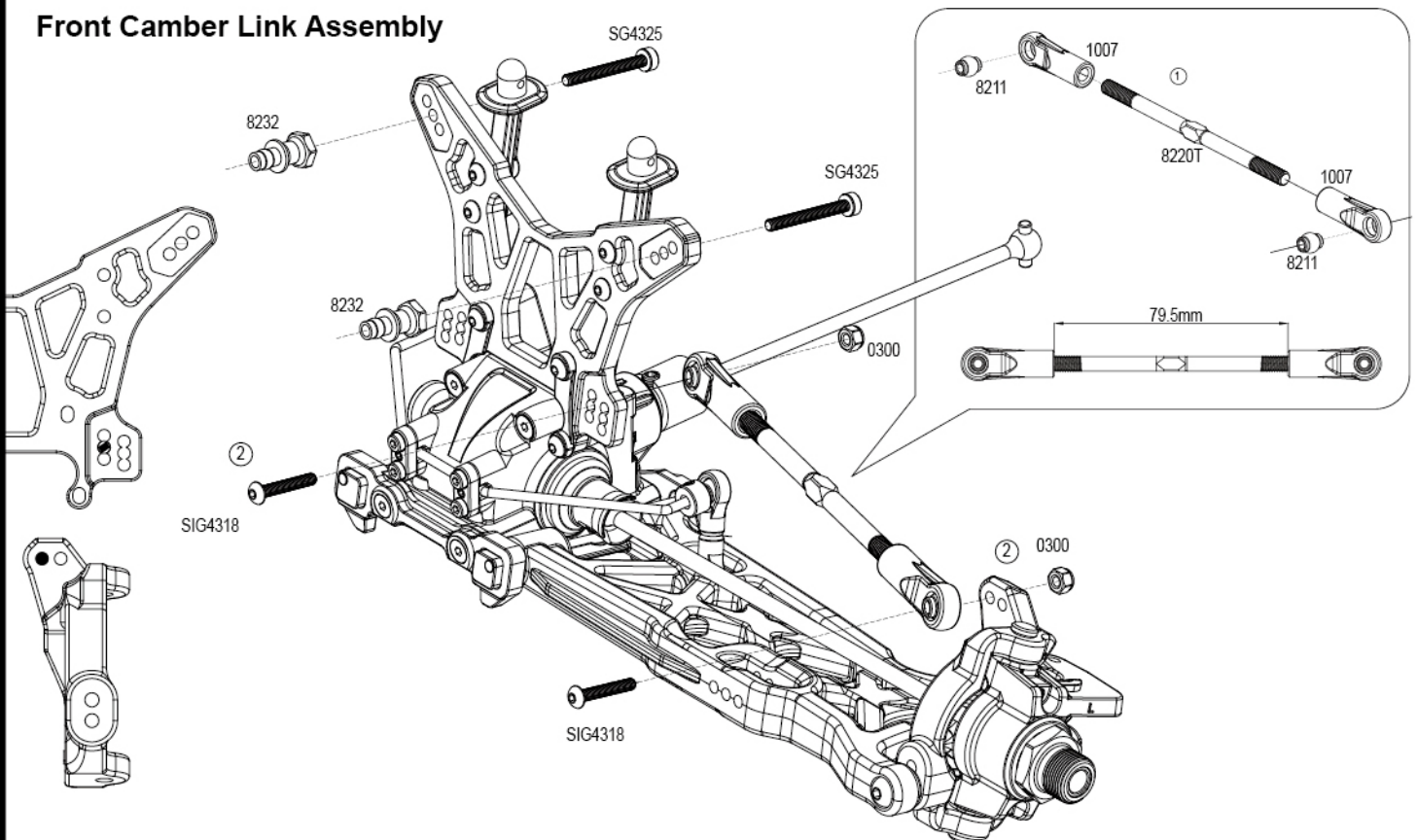
## STEP D - 5

### Front Shock Tower Assembly



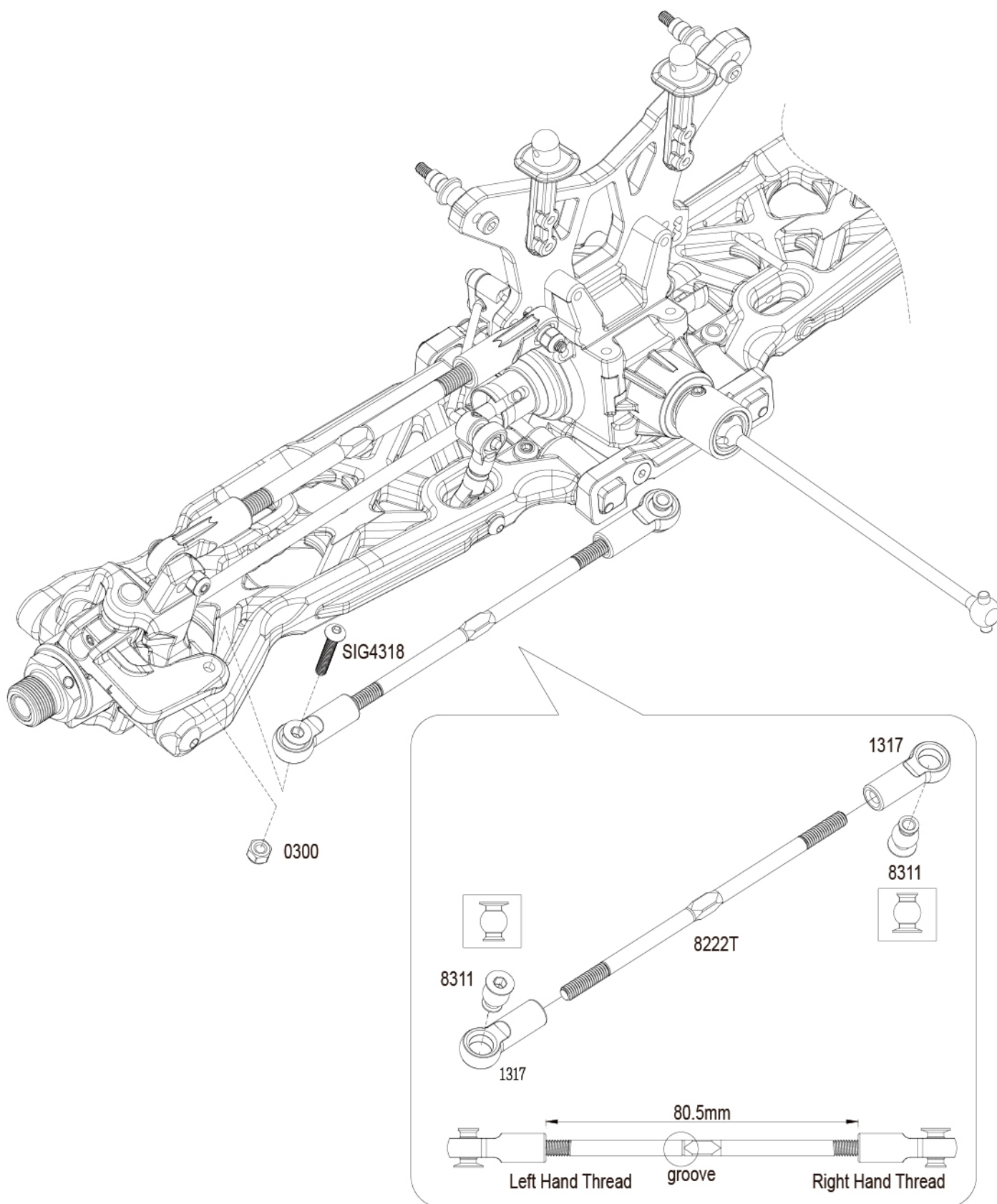
## STEP D - 6

### Front Camber Link Assembly



## STEP D - 7

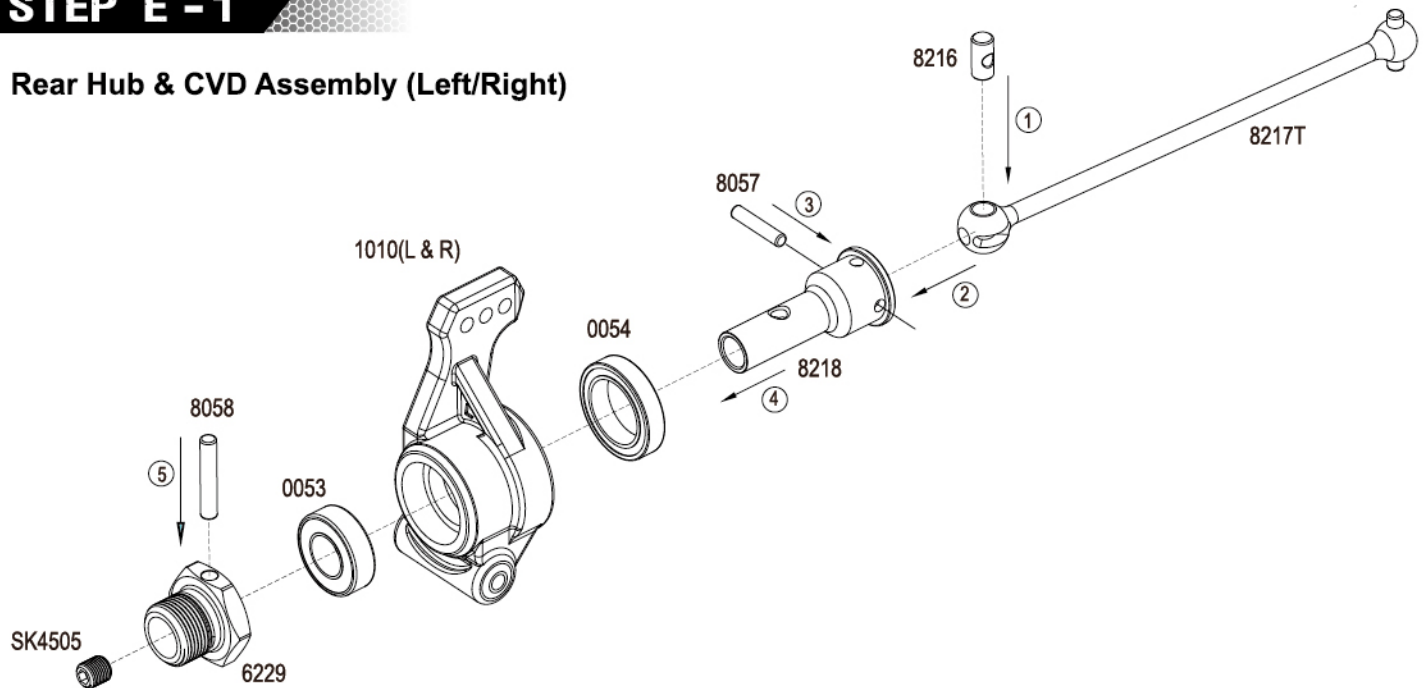
### Front Steering Link Assembly





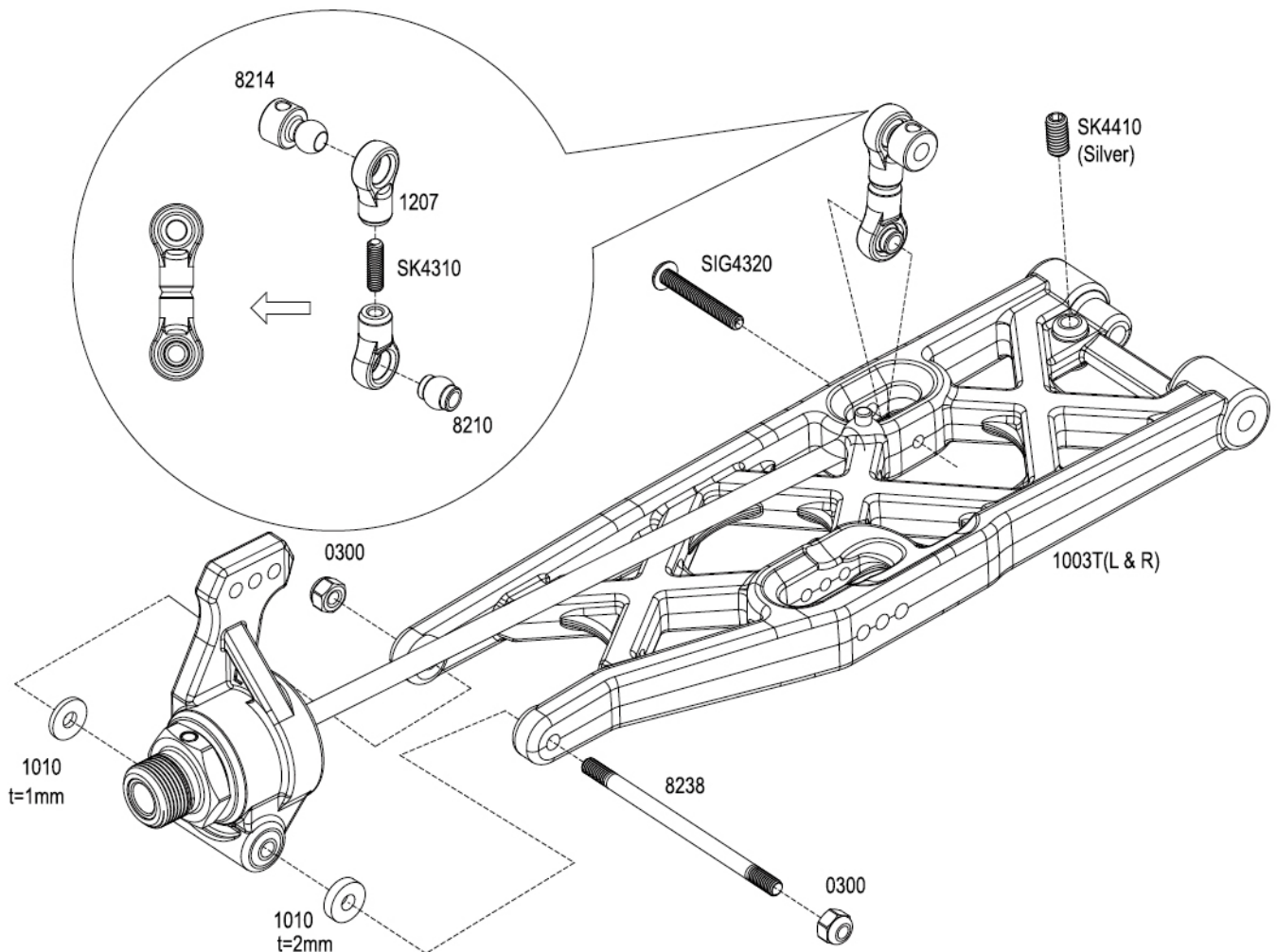
## STEP E - 1

### Rear Hub & CVD Assembly (Left/Right)



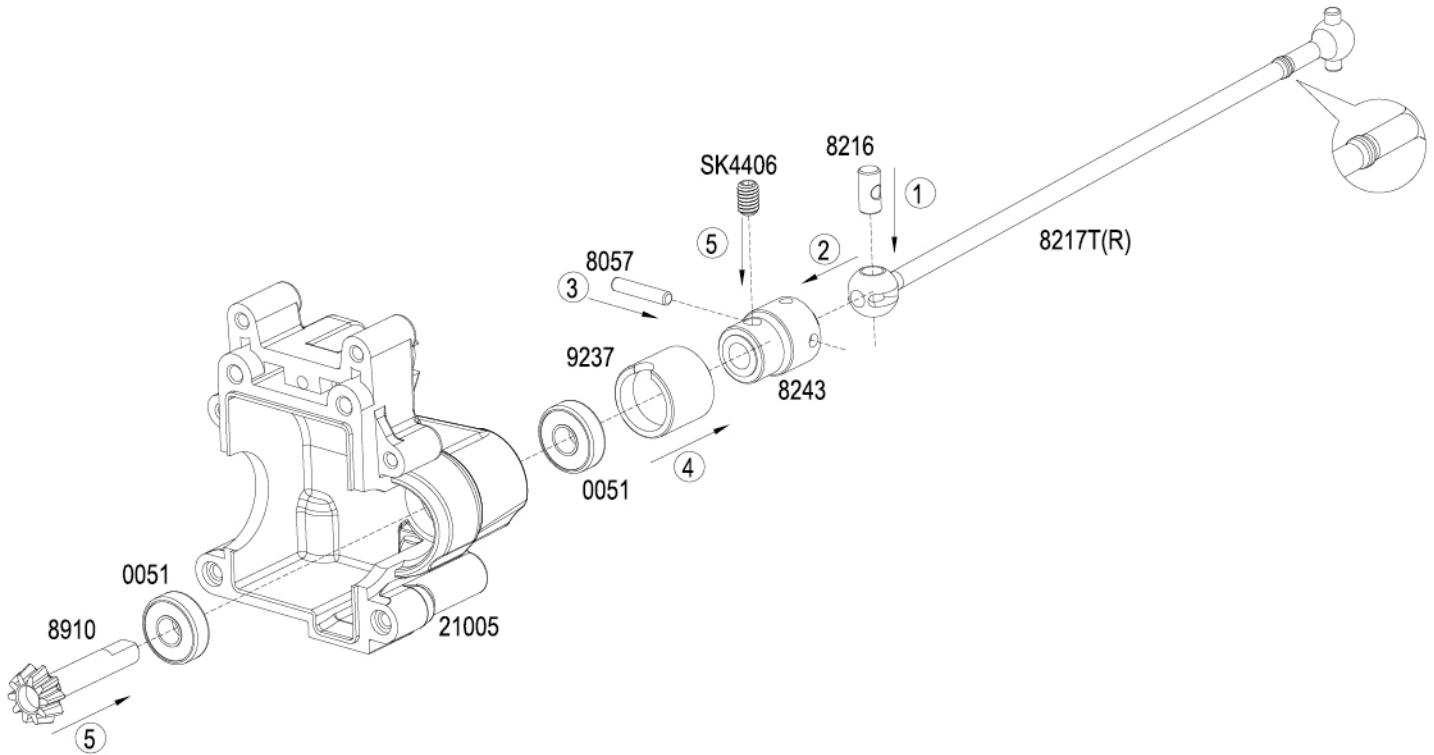
## STEP E - 2

### Rear Hub & CVD Assembly (Left/Right)



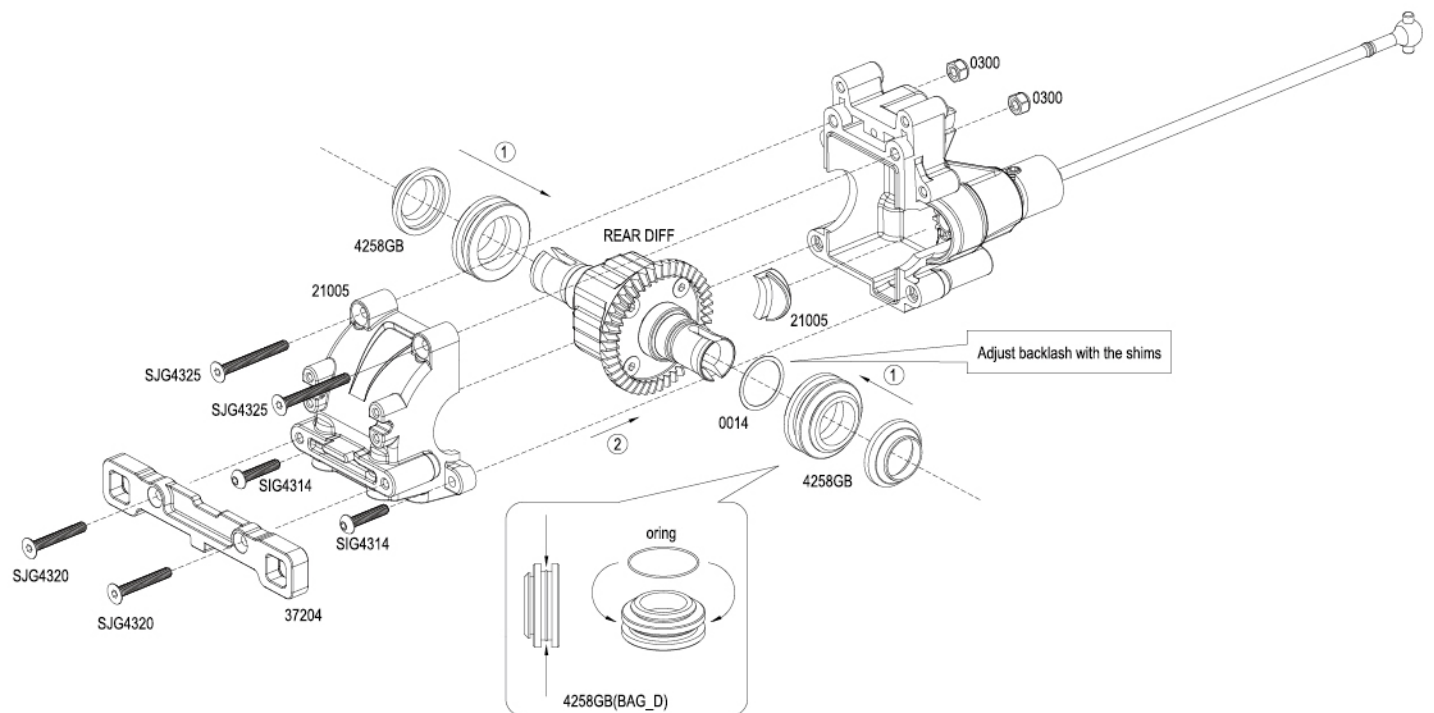
## STEP F - 1

### Rear Diff Case & CVD Assembly



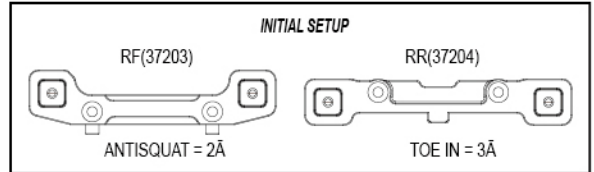
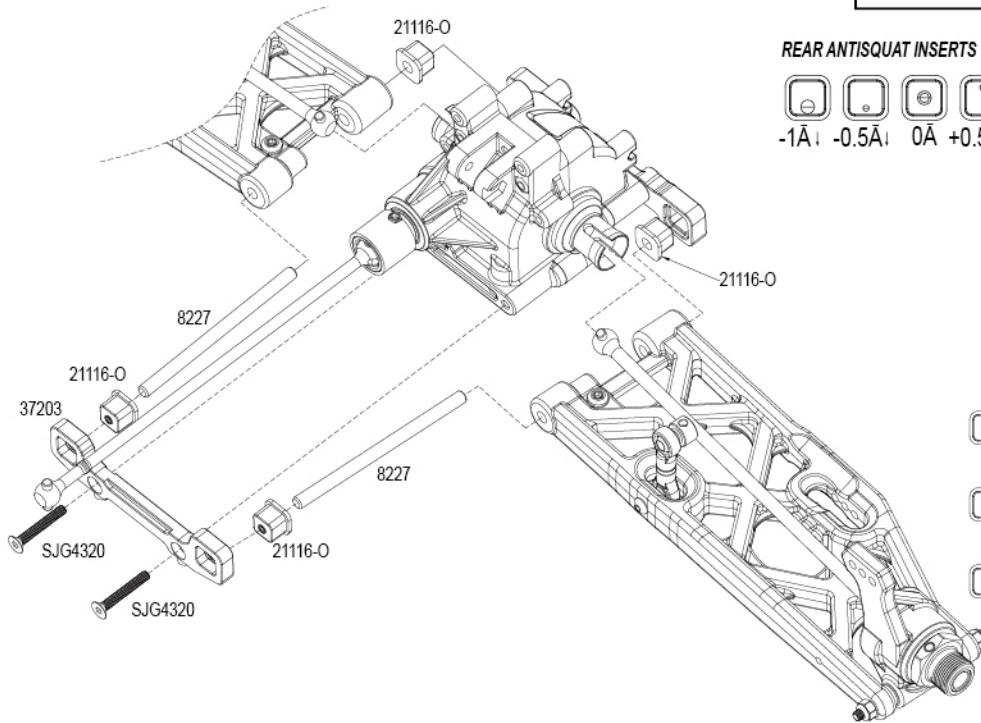
## STEP F - 2

### Rear Diff Install



## STEP F - 3

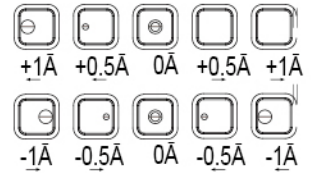
### Rear Hubs & Suspension Arm Assembly (Left/Right)



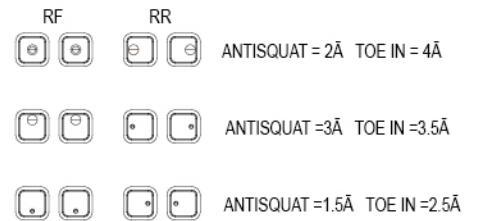
#### REAR ANTISQUAT INSERTS CHART(RF)



#### REAR TOE IN INSERTS CHART(RR)

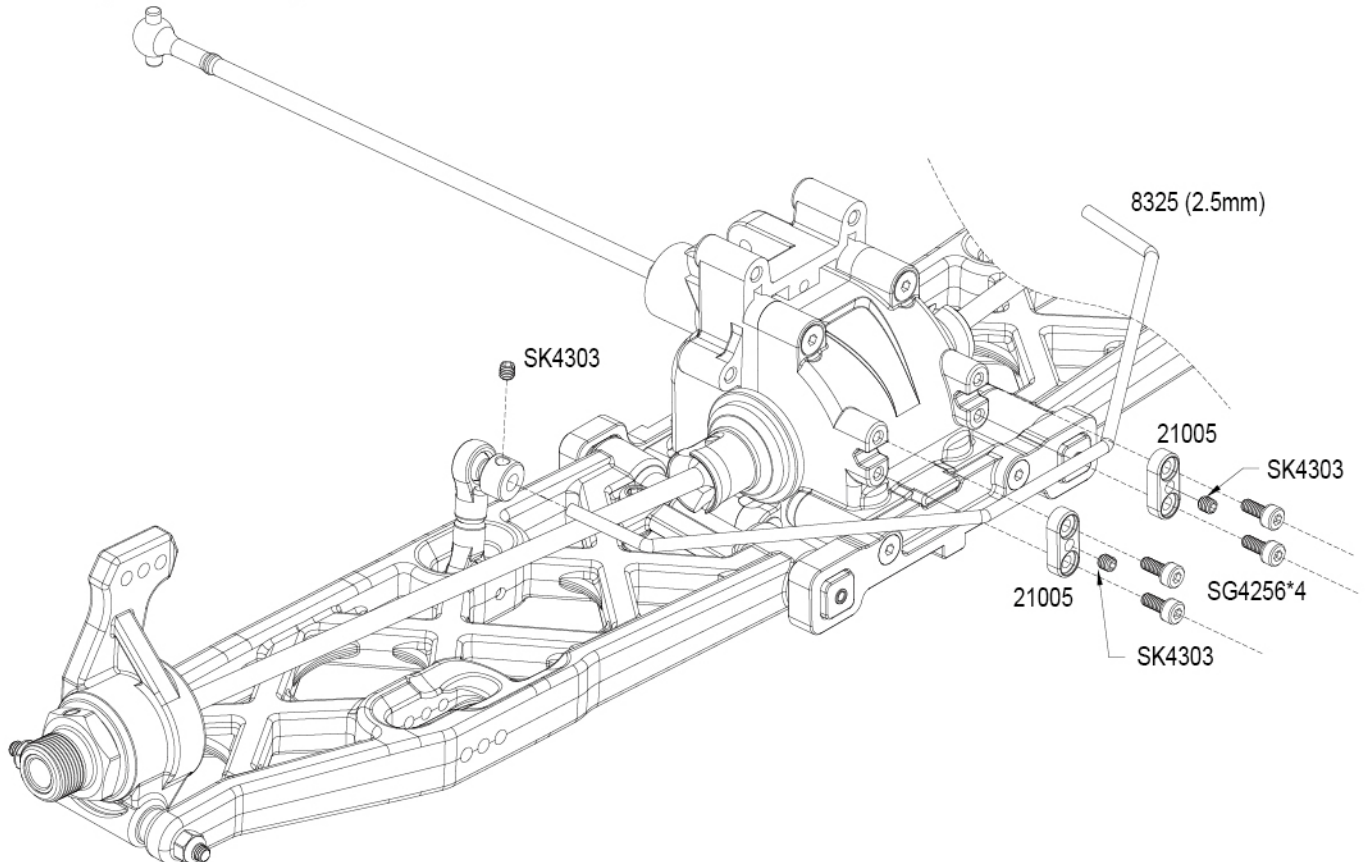


#### OTHER SETTING EXAMPLES



## STEP F - 4

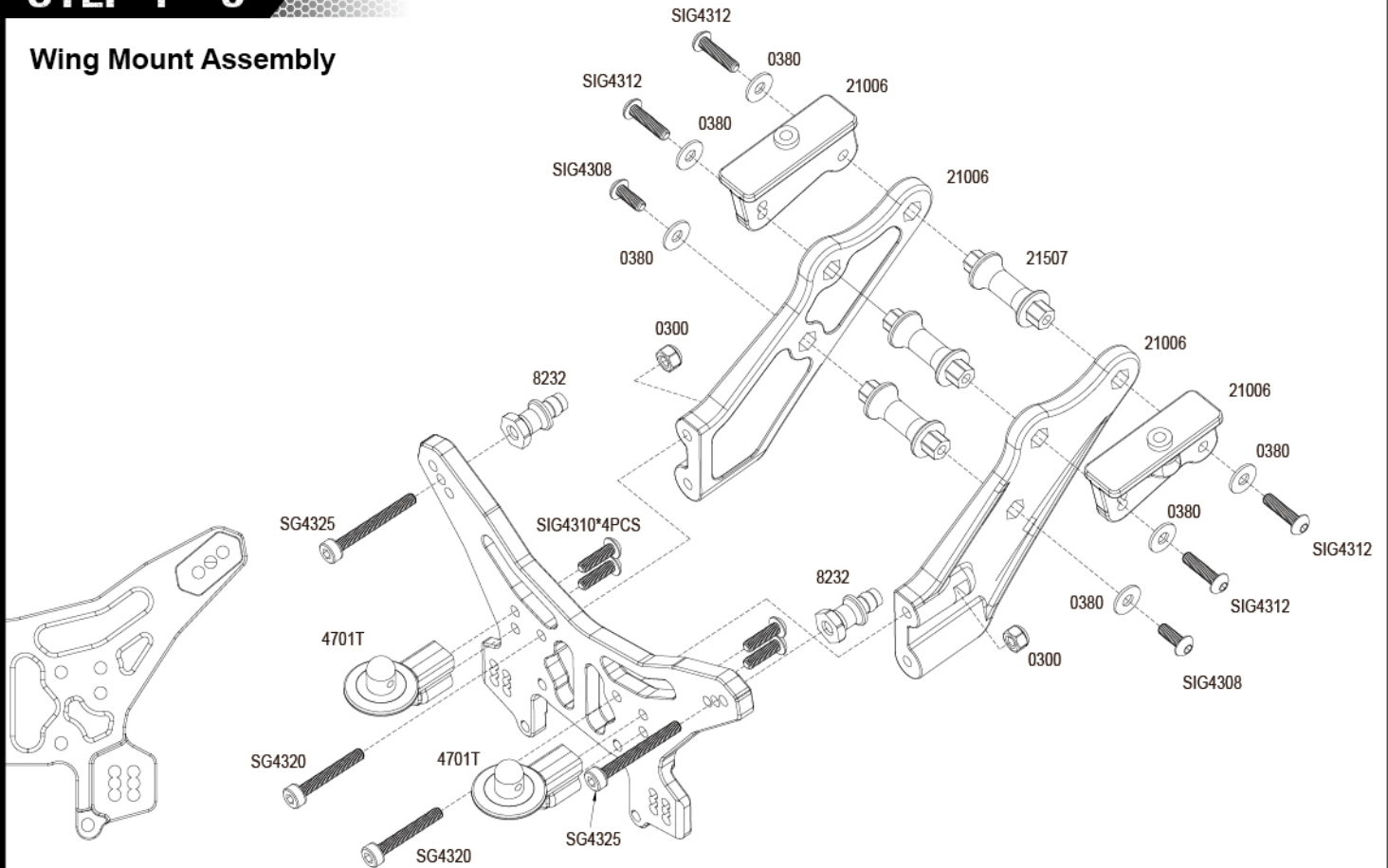
### Rear Swaybar Assembly





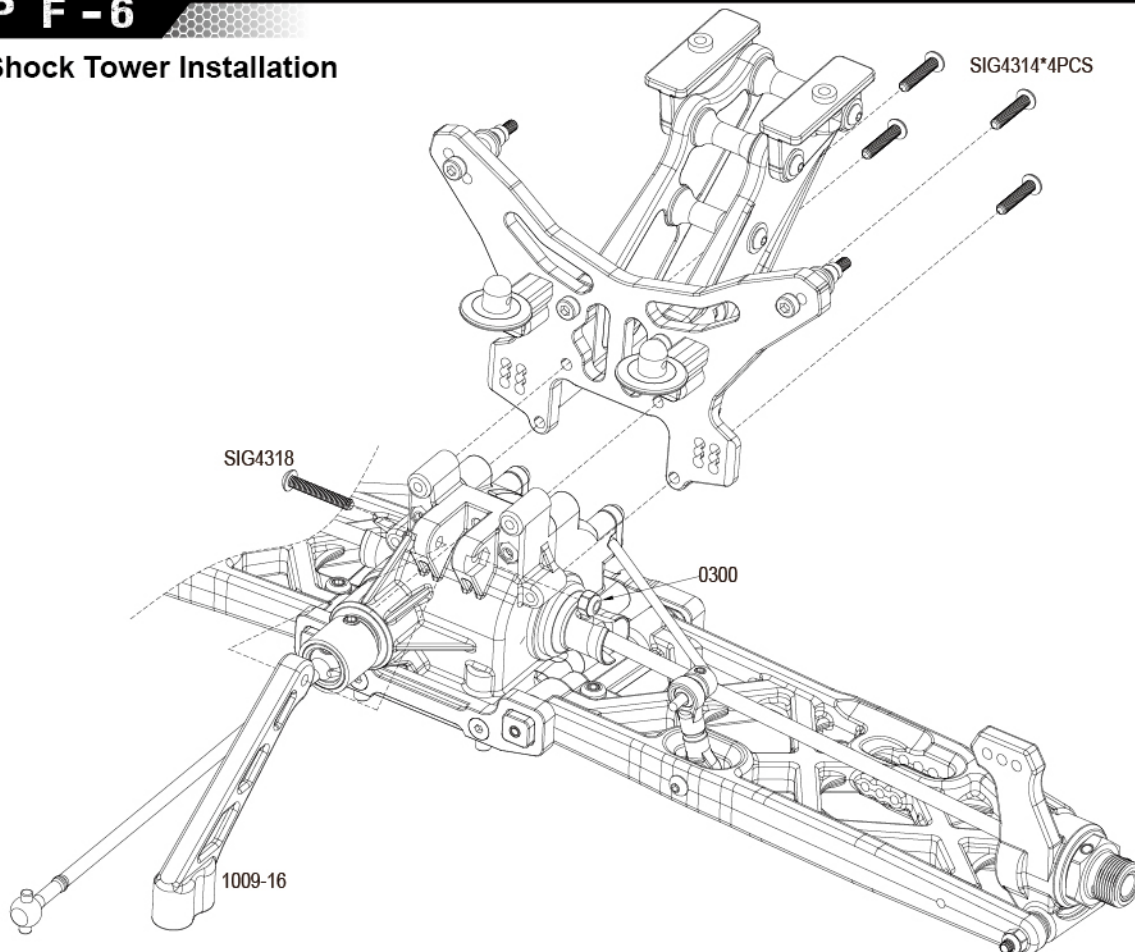
## STEP F - 5

### Wing Mount Assembly



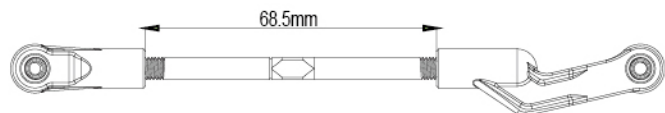
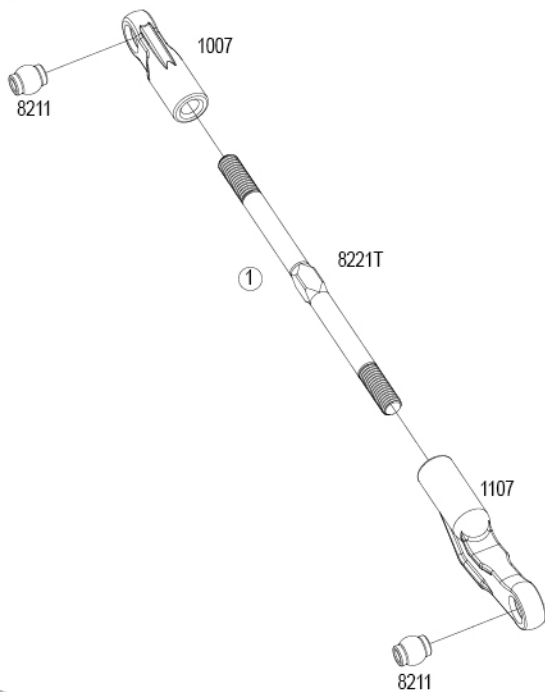
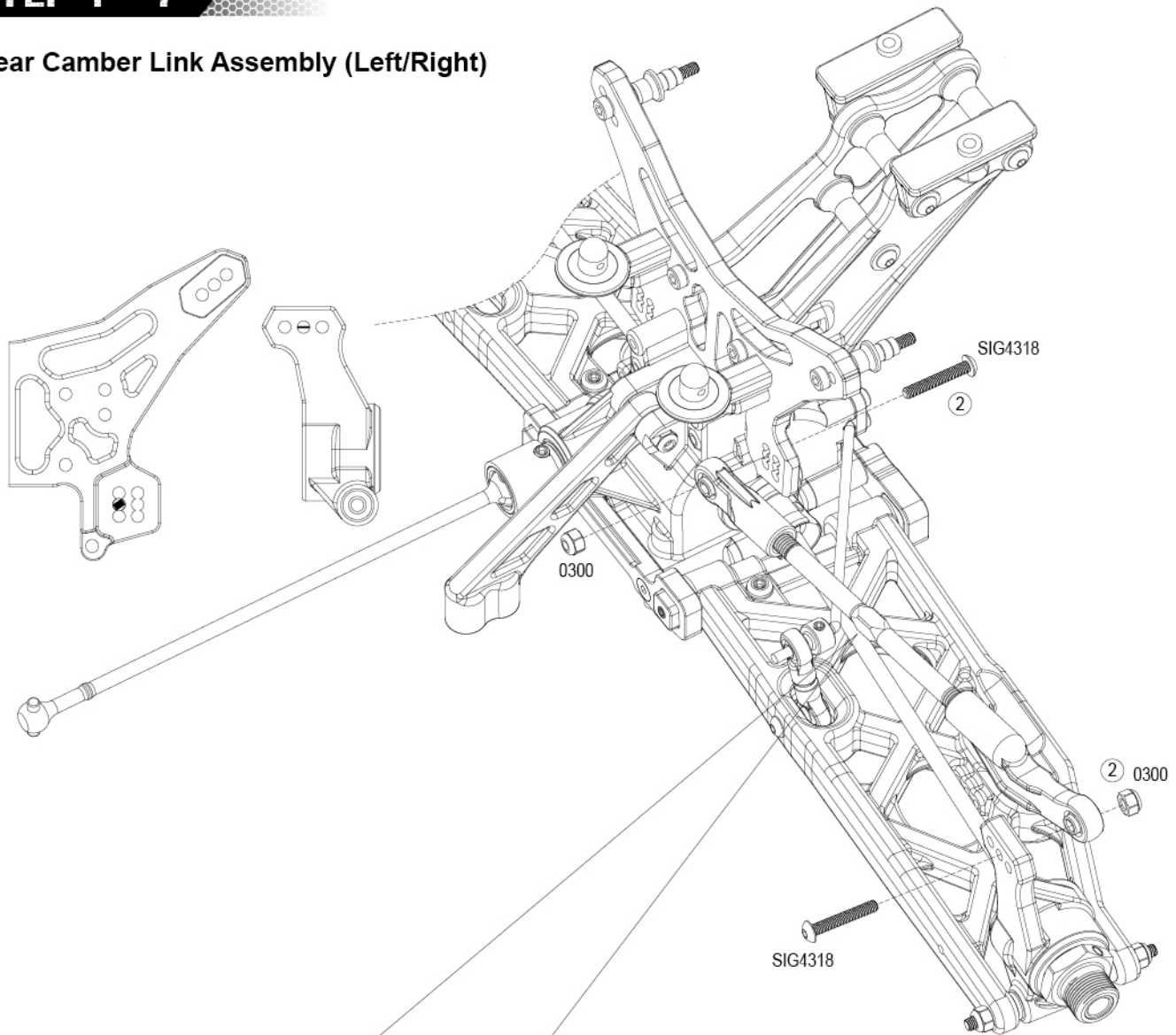
## STEP F - 6

### Rear Shock Tower Installation



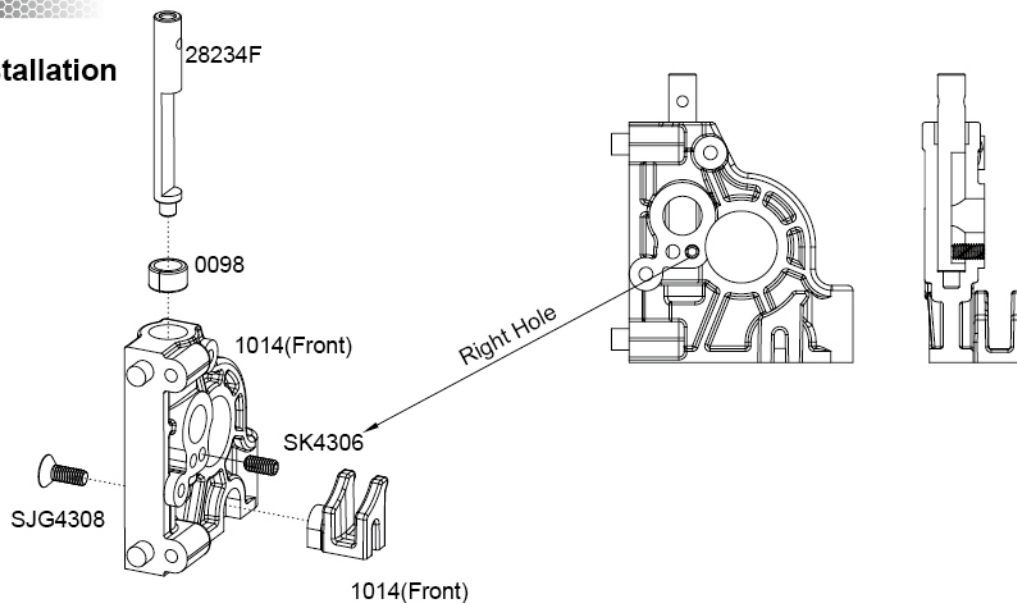
## STEP F - 7

### Rear Camber Link Assembly (Left/Right)



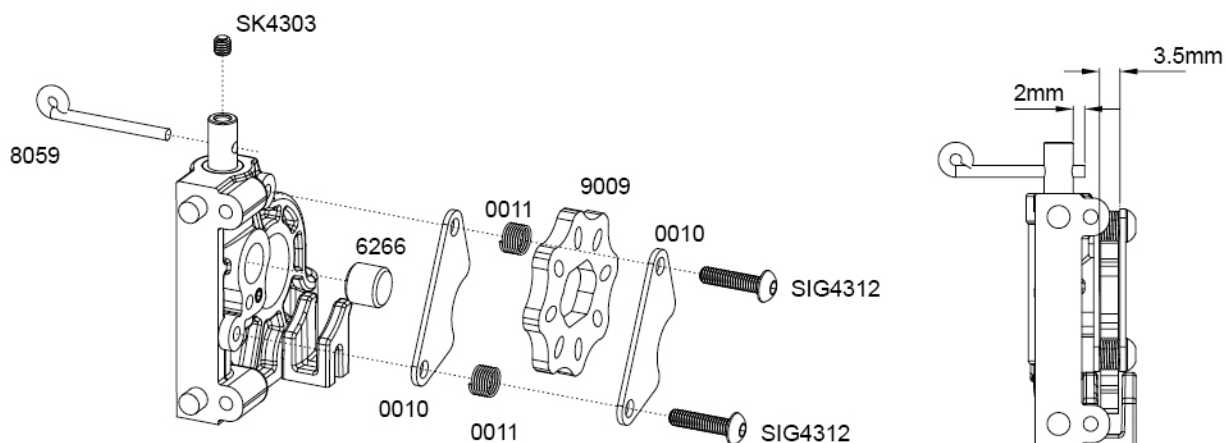
## STEP G - 1

### Center Diff/Brake Installation



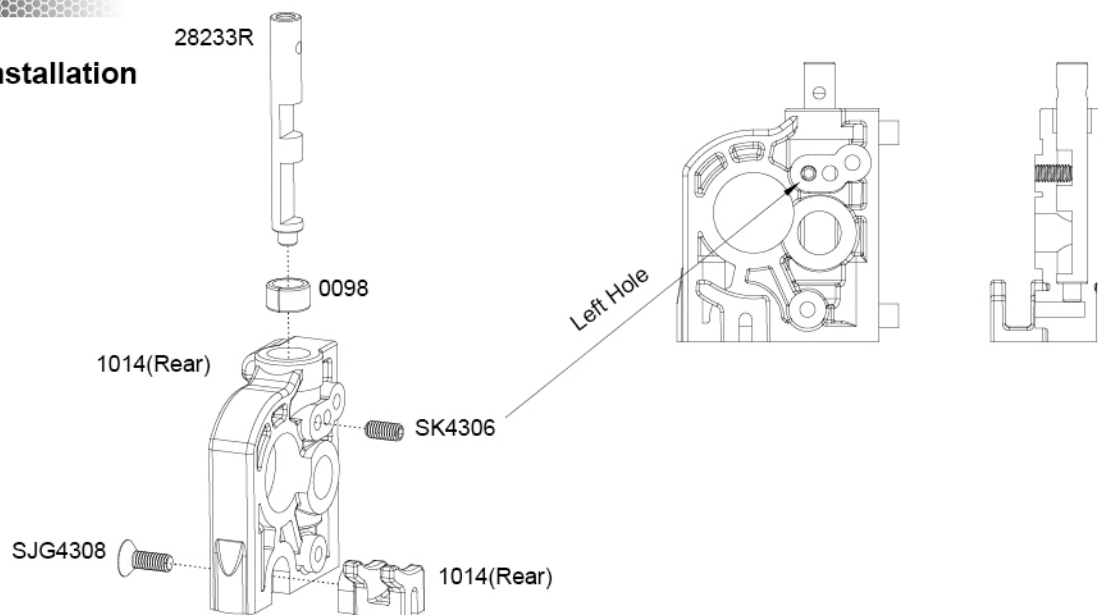
## STEP G - 2

### Center Diff/Brake Installation



## STEP G - 3

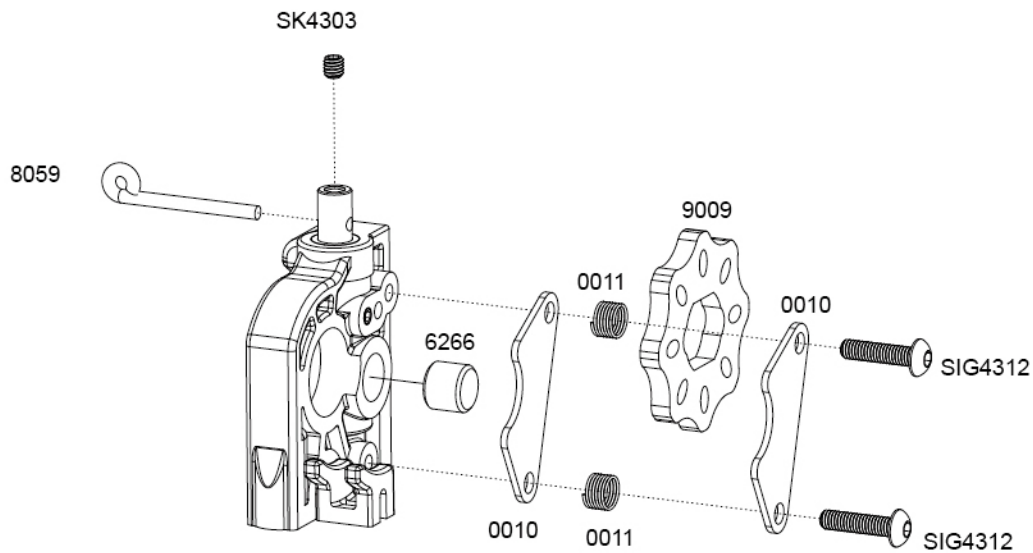
### Center Diff/Brake Installation





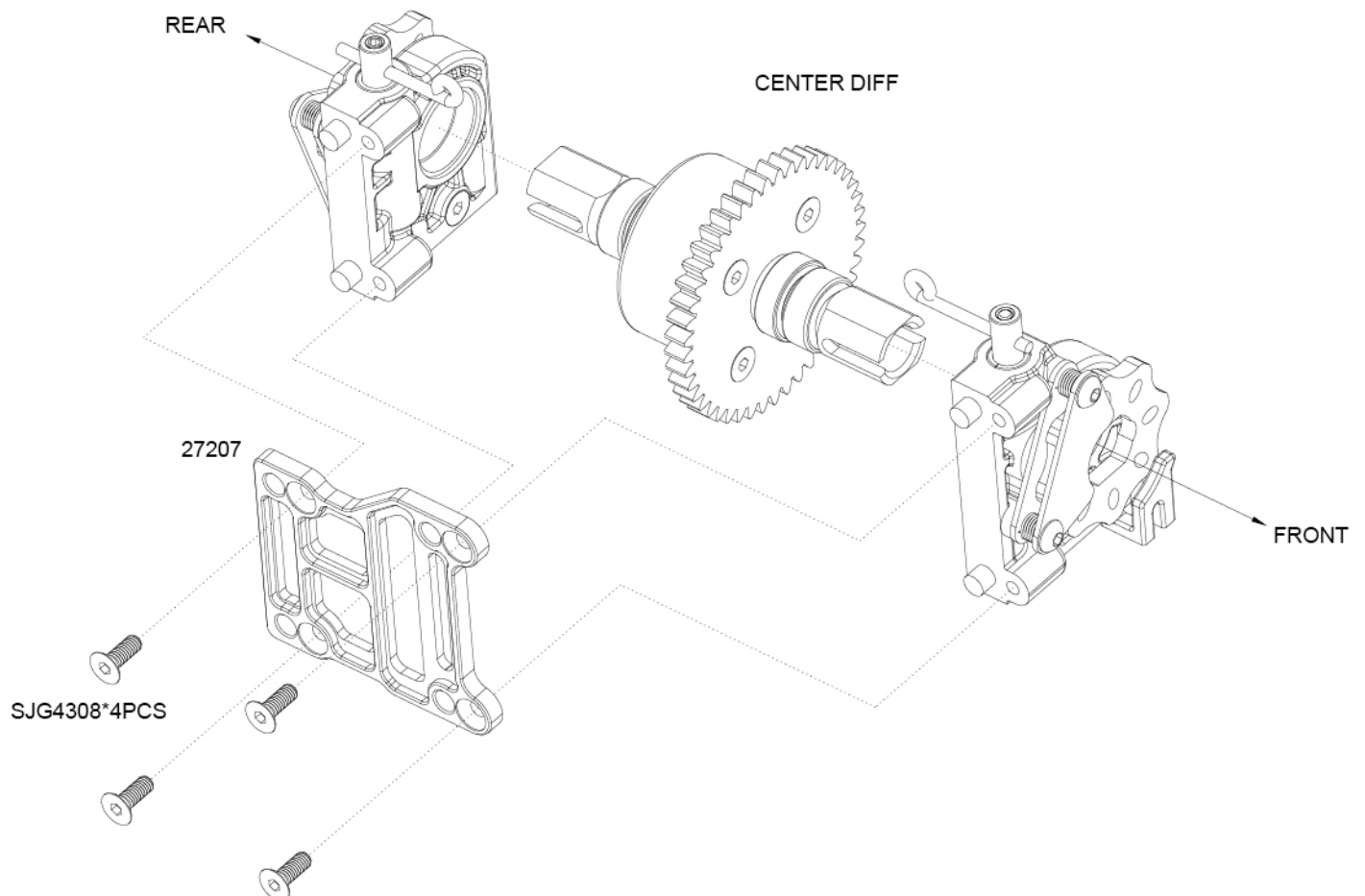
## STEP G - 4

### Center Diff/Brake Installation



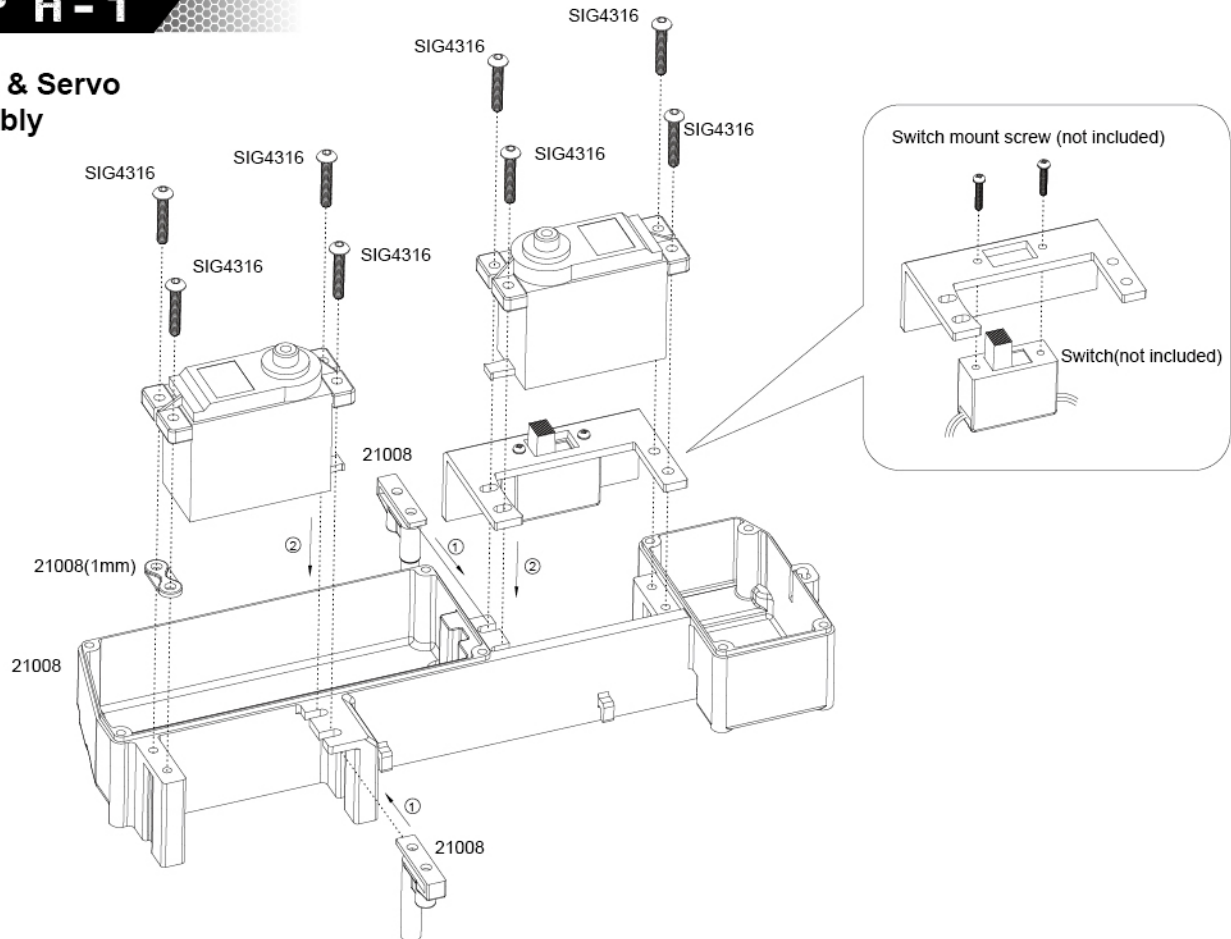
## STEP G - 5

### Center Diff/Brake Installation



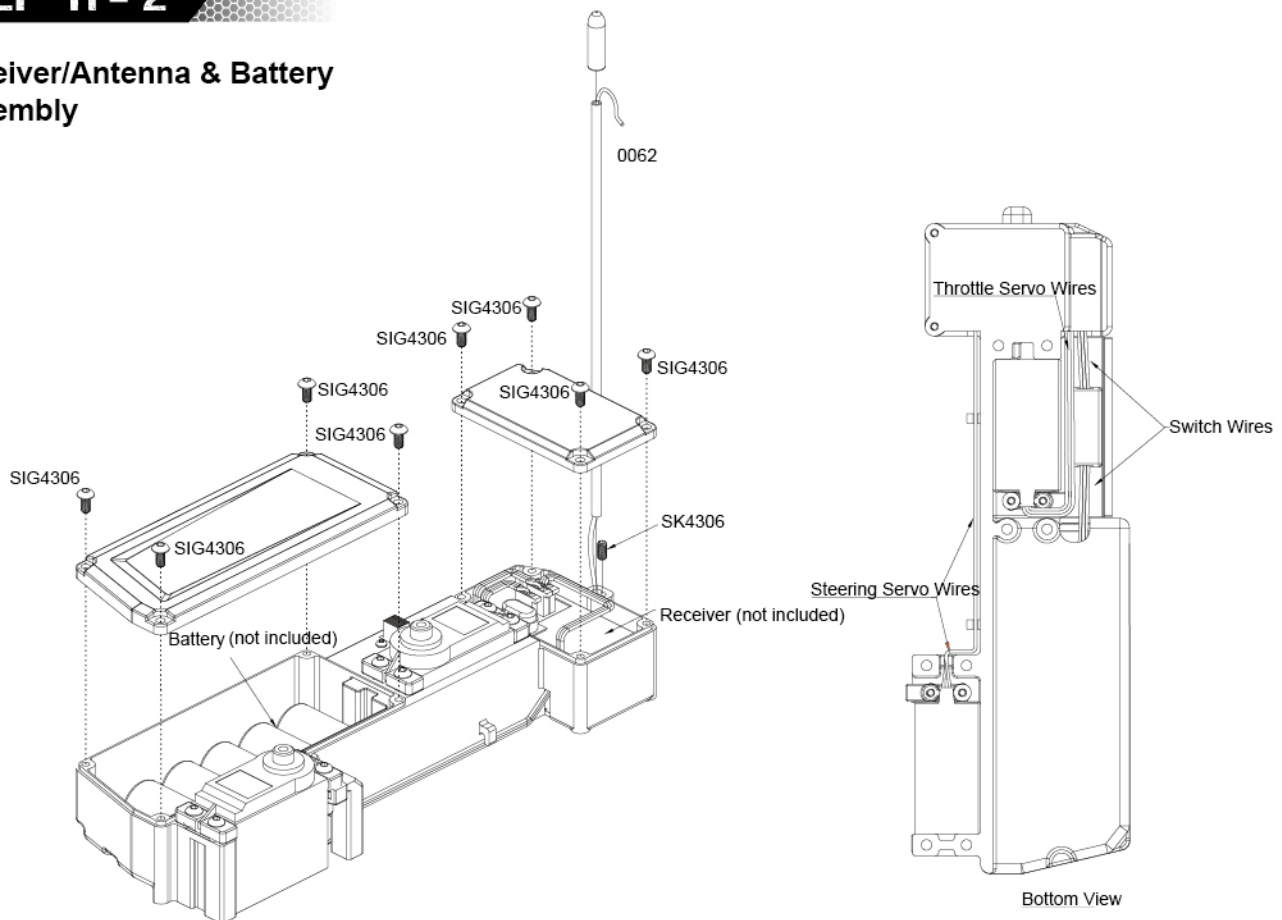
## STEP H-1

## Switch & Servo Assembly



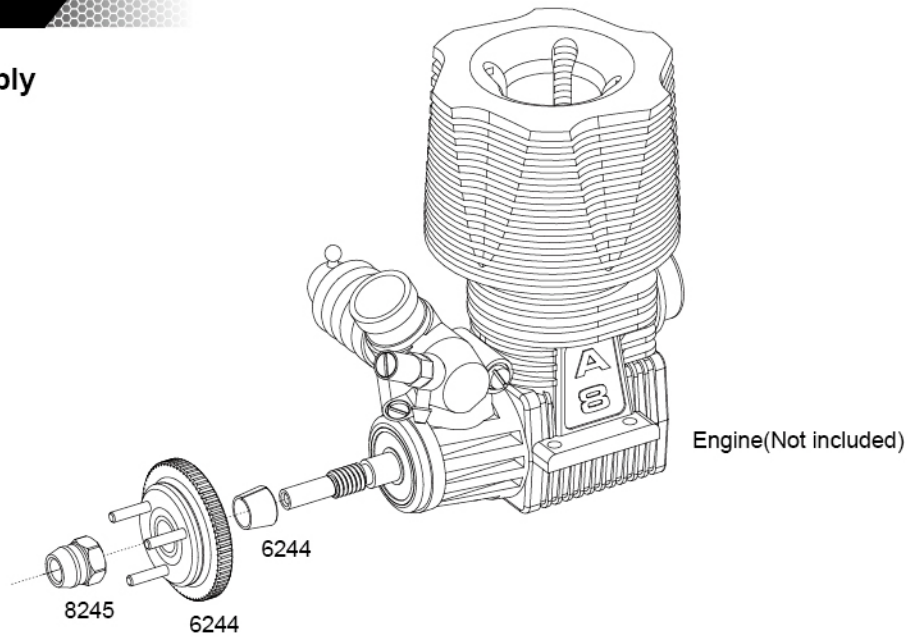
## STEP H - 2

## Receiver/Antenna & Battery Assembly



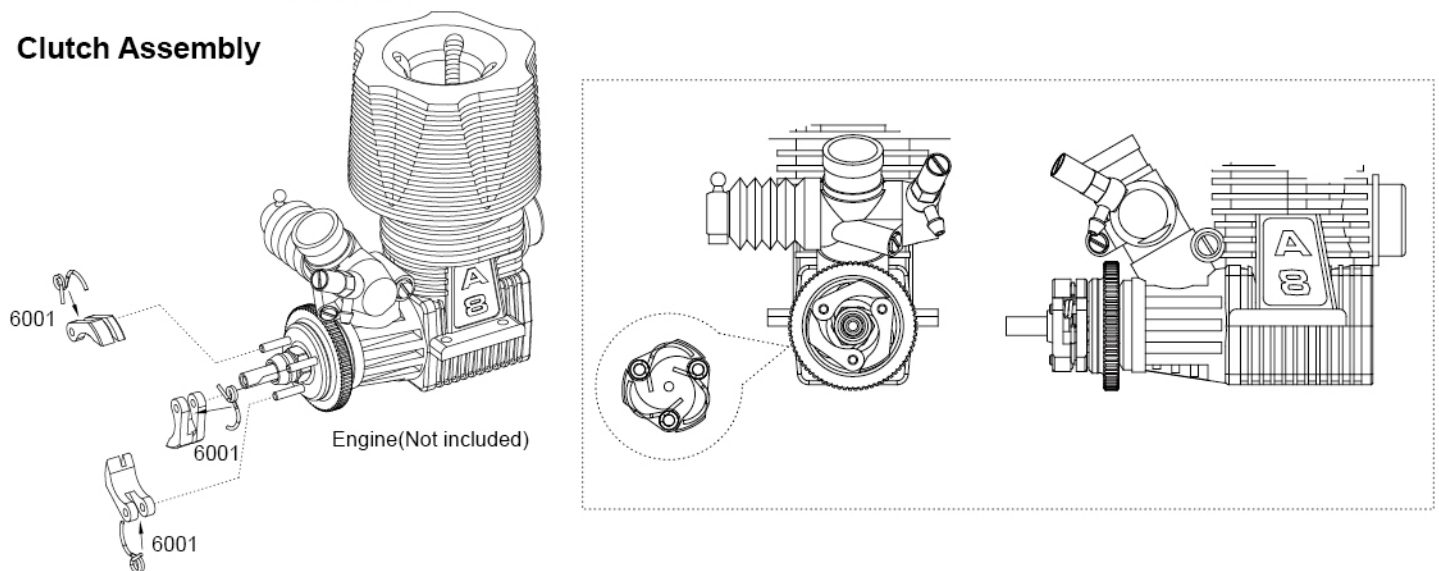
## STEP 1-1

### Clutch Assembly



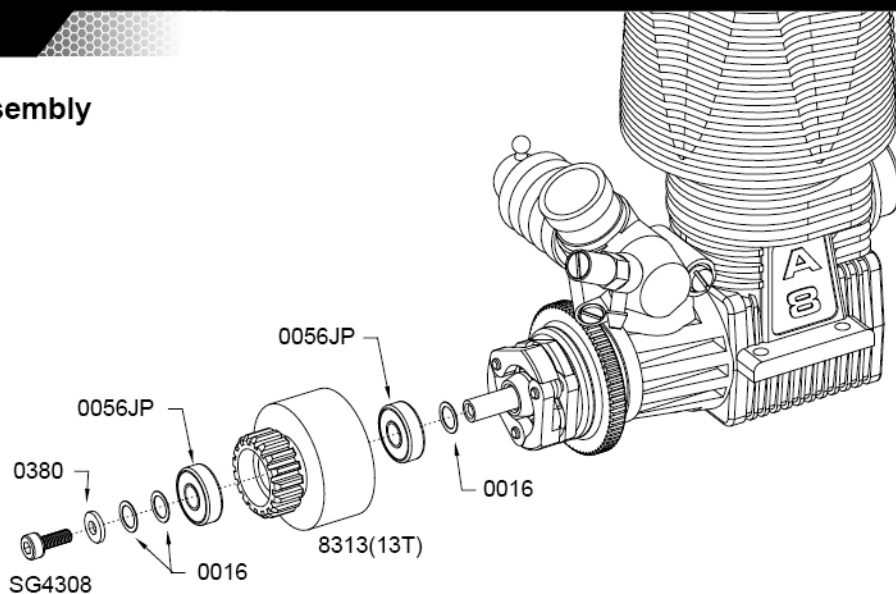
## STEP 1-2

### Clutch Assembly



## STEP 1-3

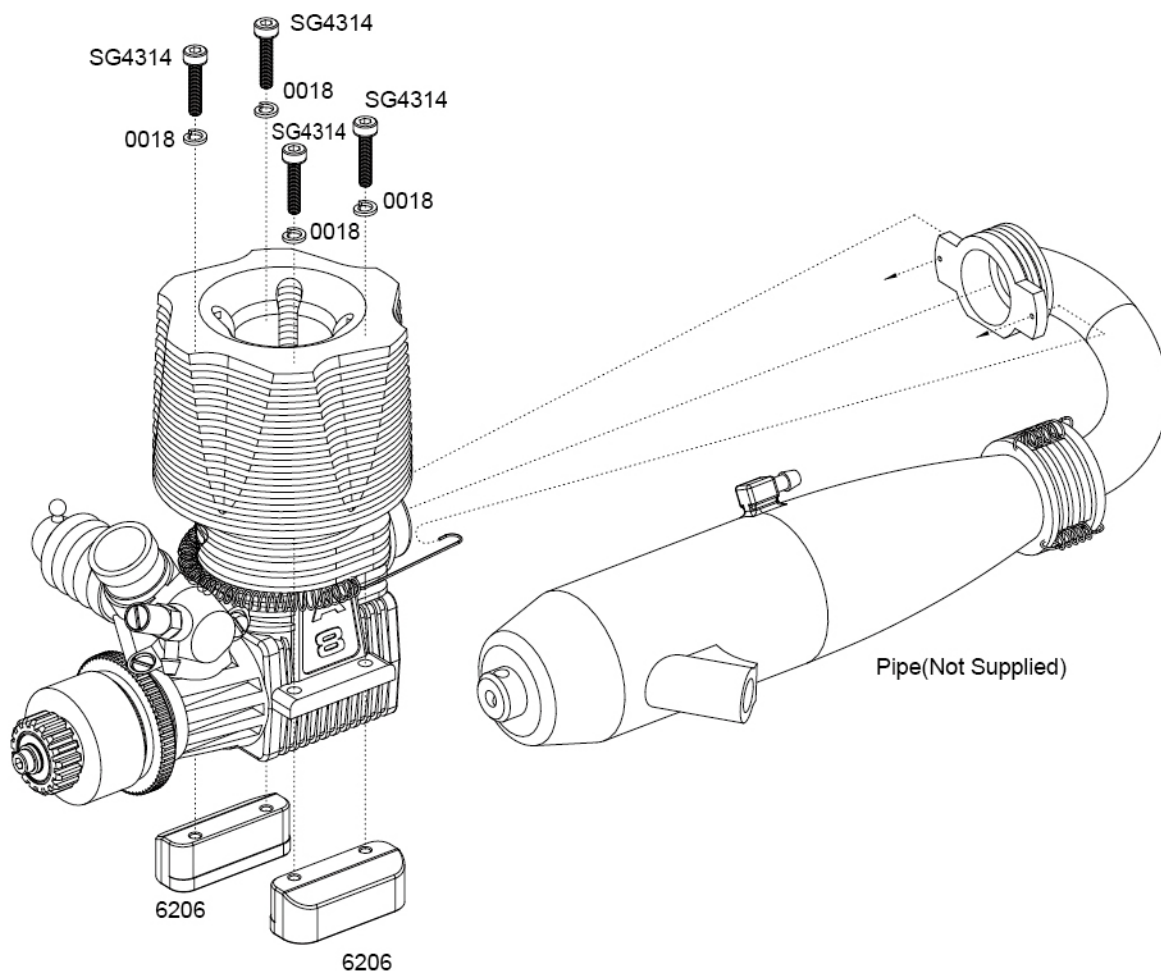
### Clutch Bell Assembly





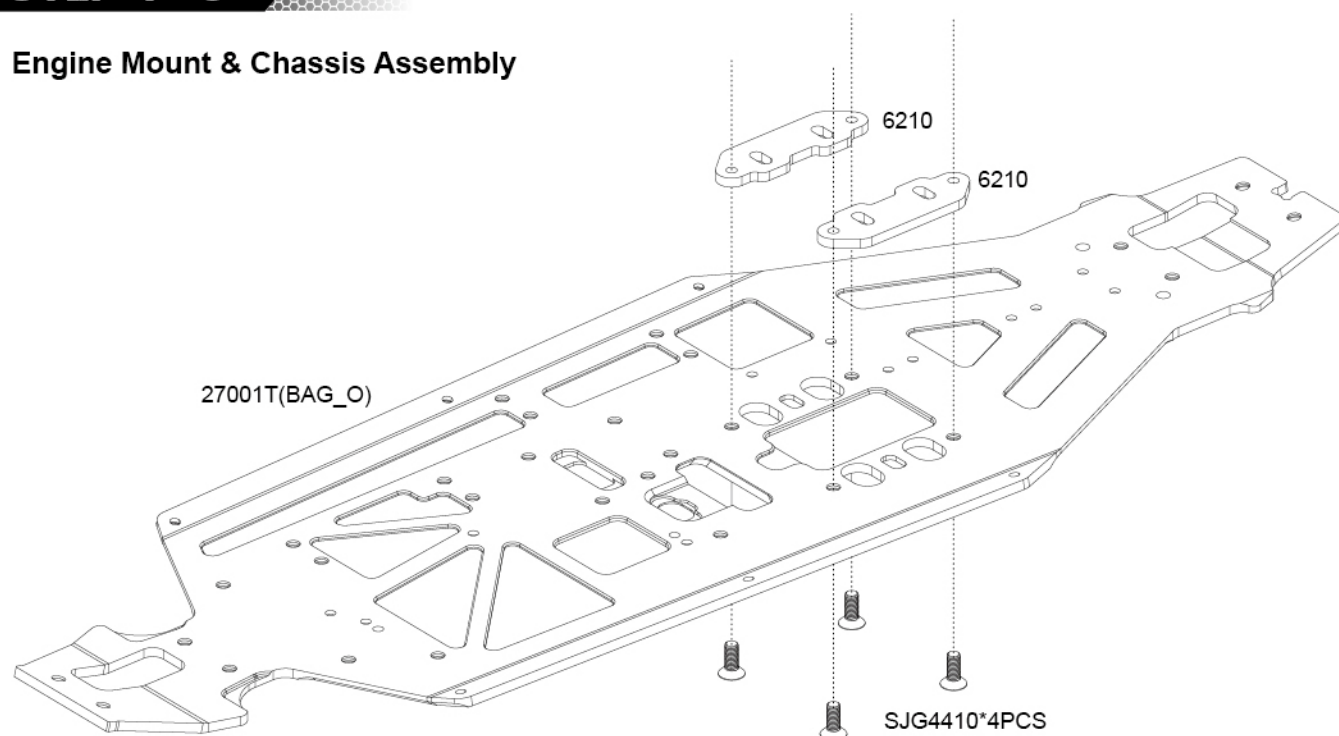
## STEP 1-4

### Engine Mount & Pipe Assembly



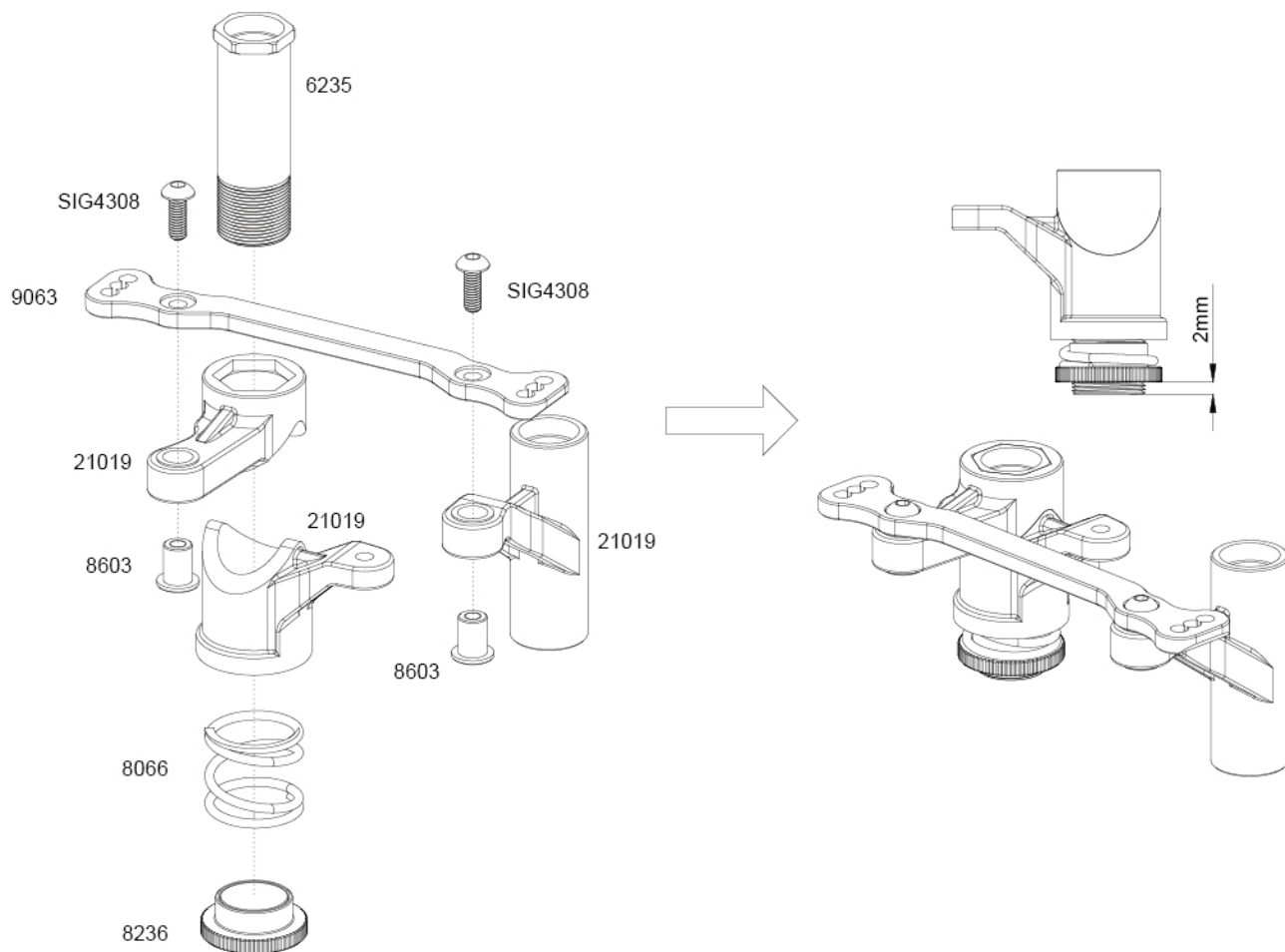
## STEP 1-5

### Engine Mount & Chassis Assembly



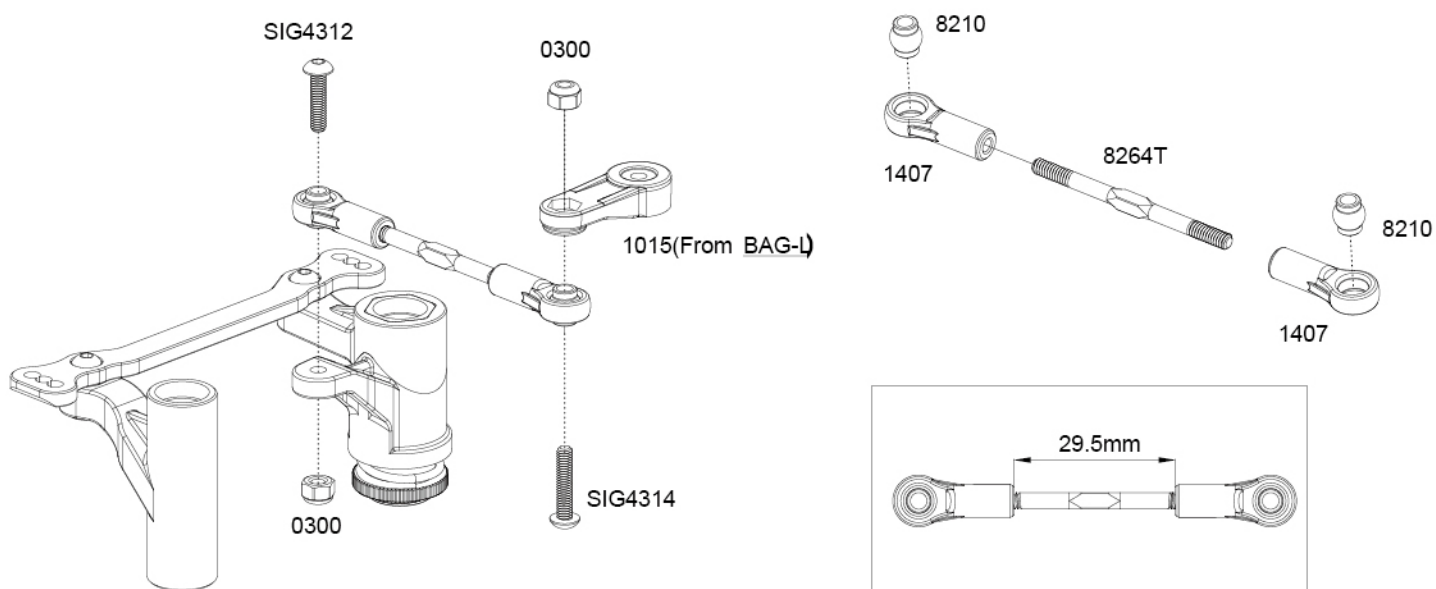
## STEP J - 1

### Servo Saver Installation



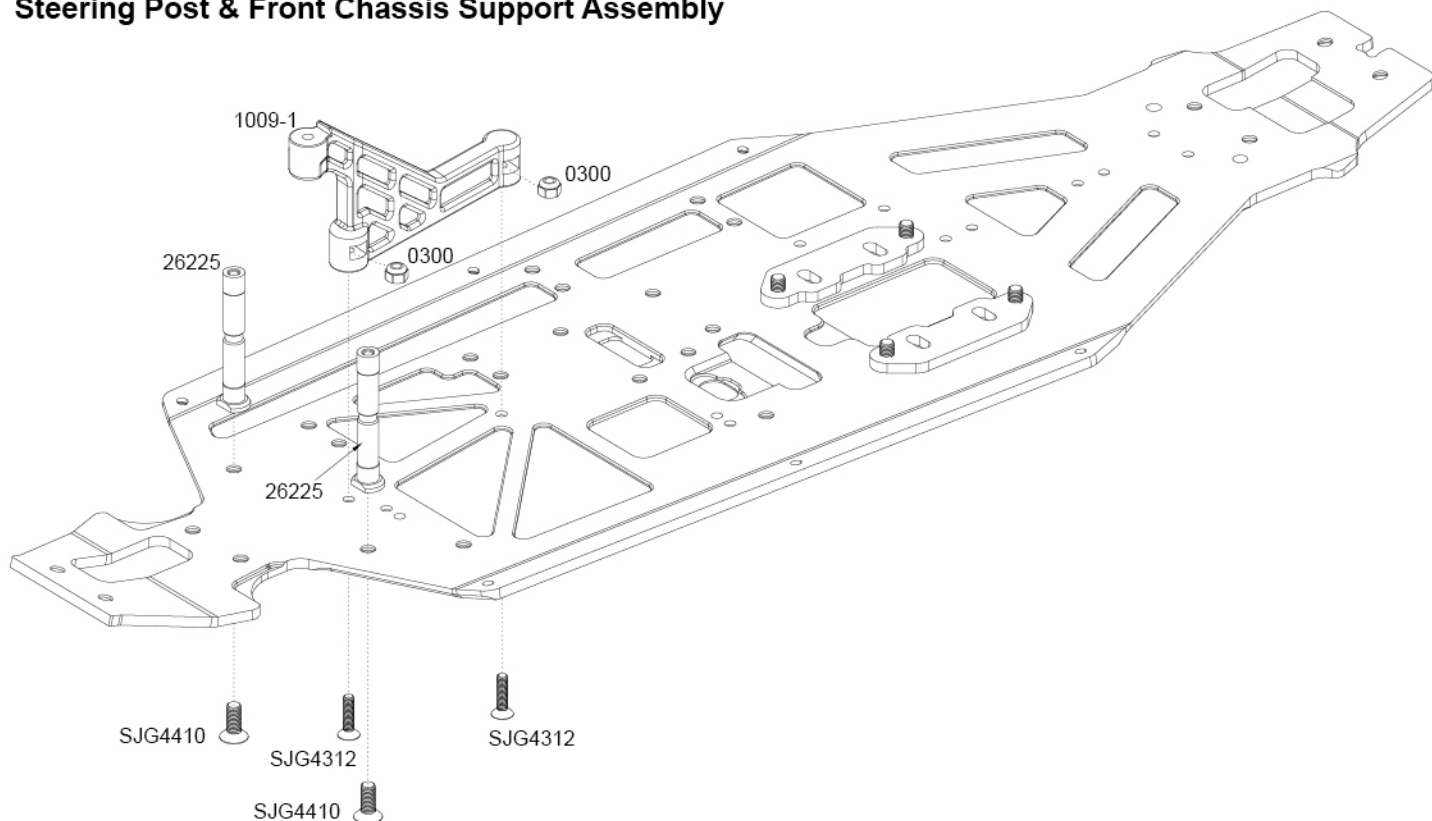
## STEP J - 2

### Steering Servo Link Assembly



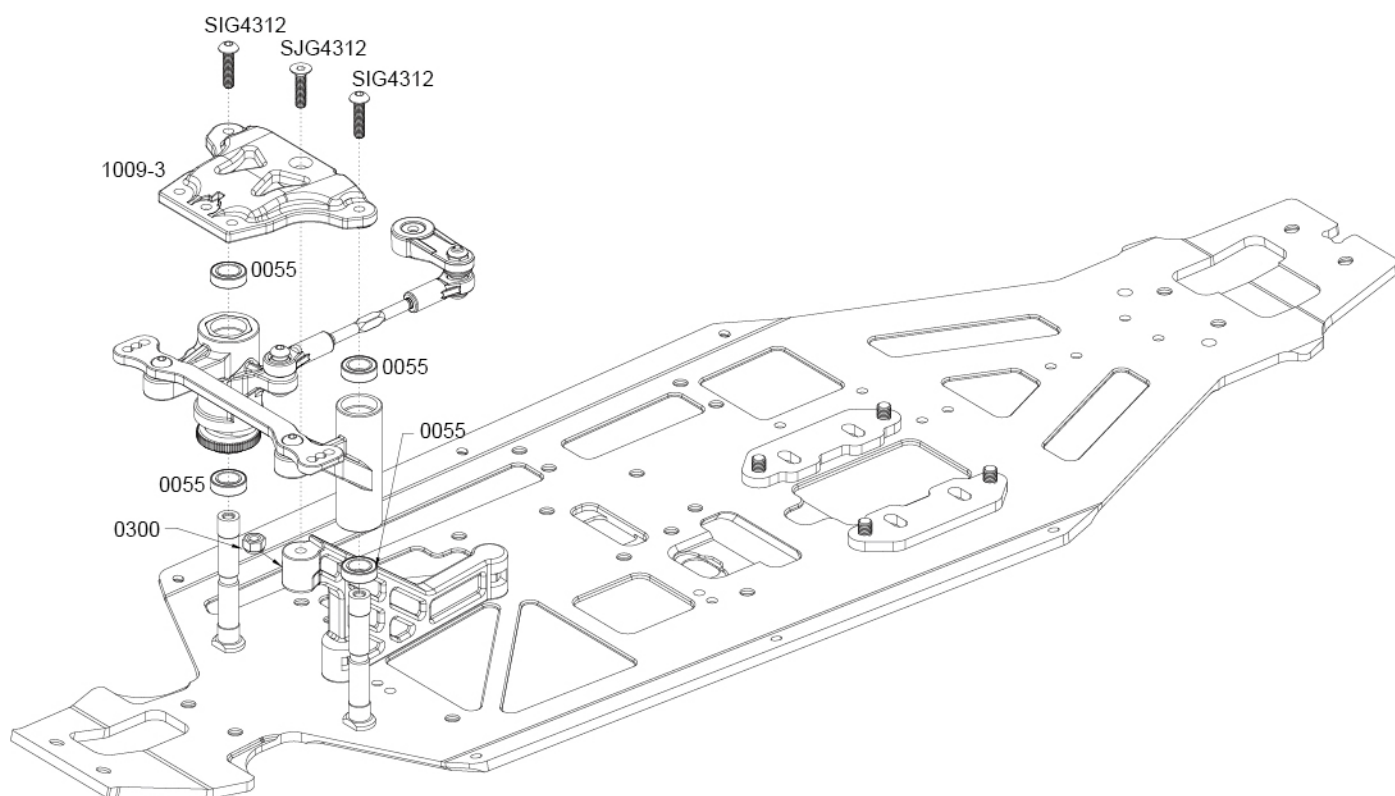
## STEP J - 3

### Steering Post & Front Chassis Support Assembly



## STEP J - 4

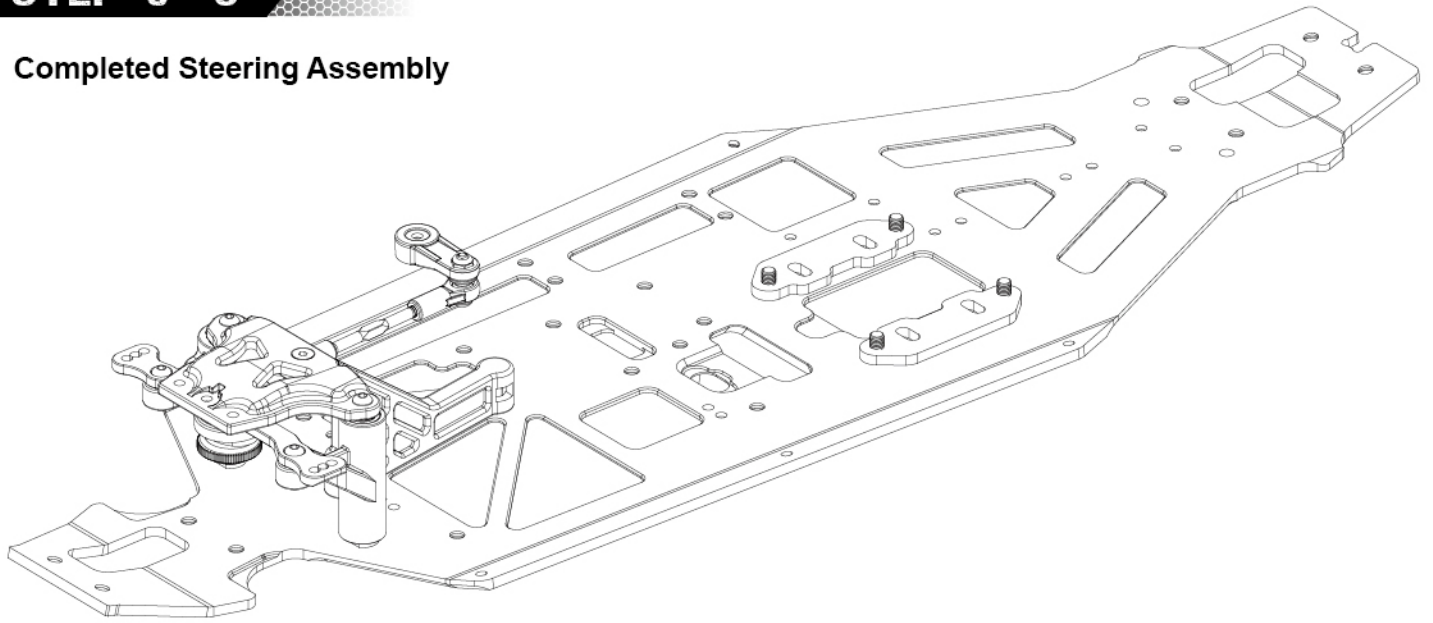
### Steering Saver & Front Chassis Brace Assembly





## STEP J - 5

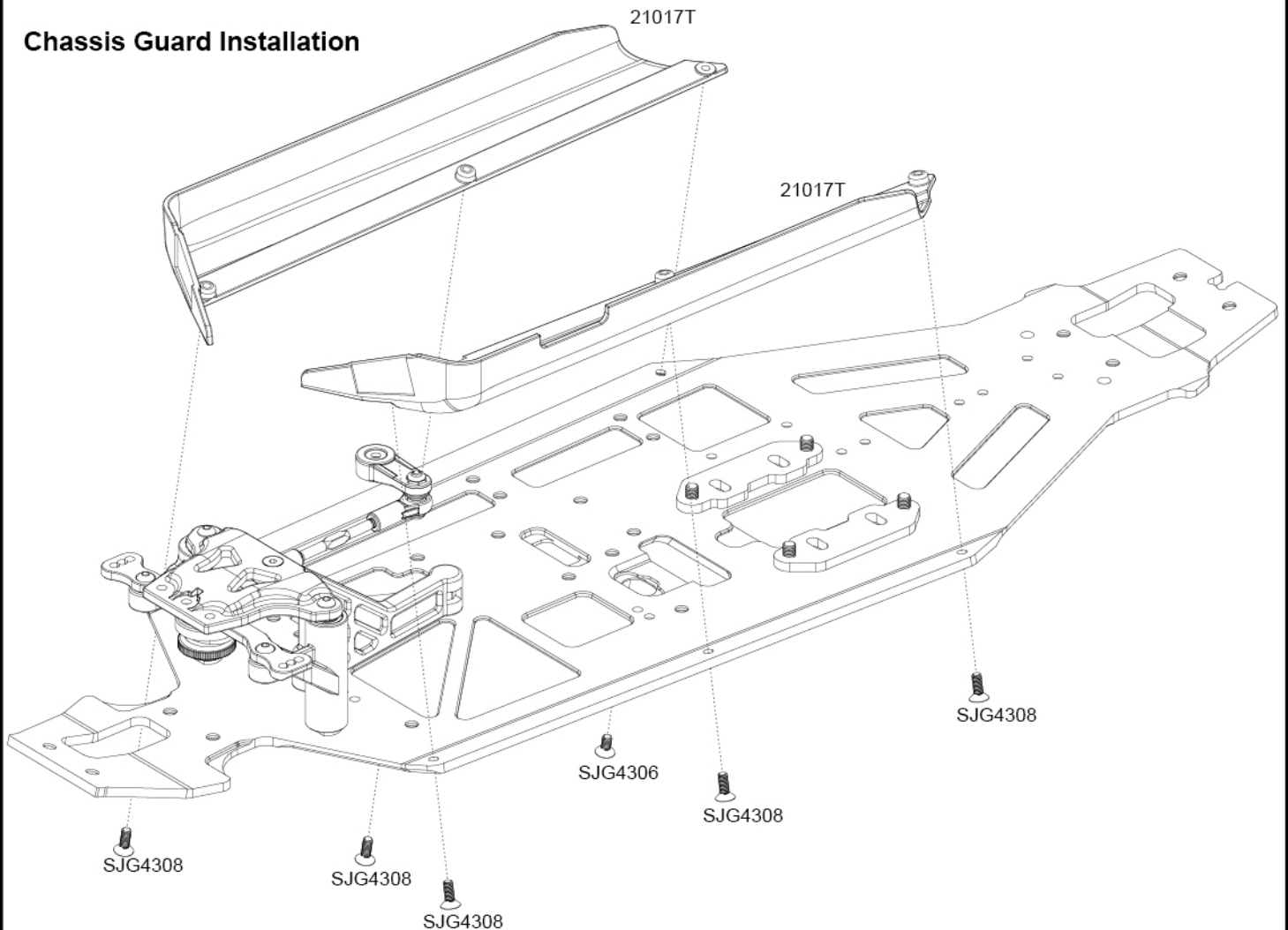
### Completed Steering Assembly



# BAG K

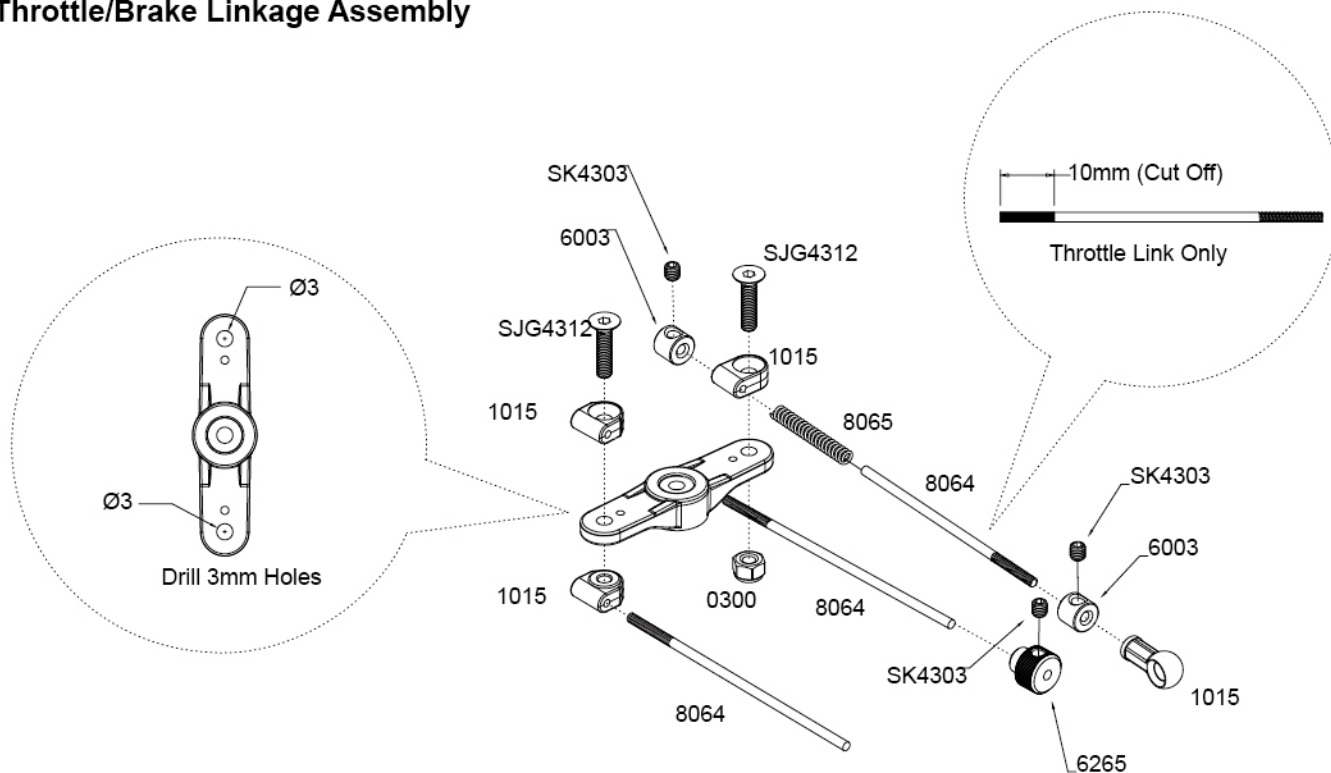
## STEP K - 1

### Chassis Guard Installation



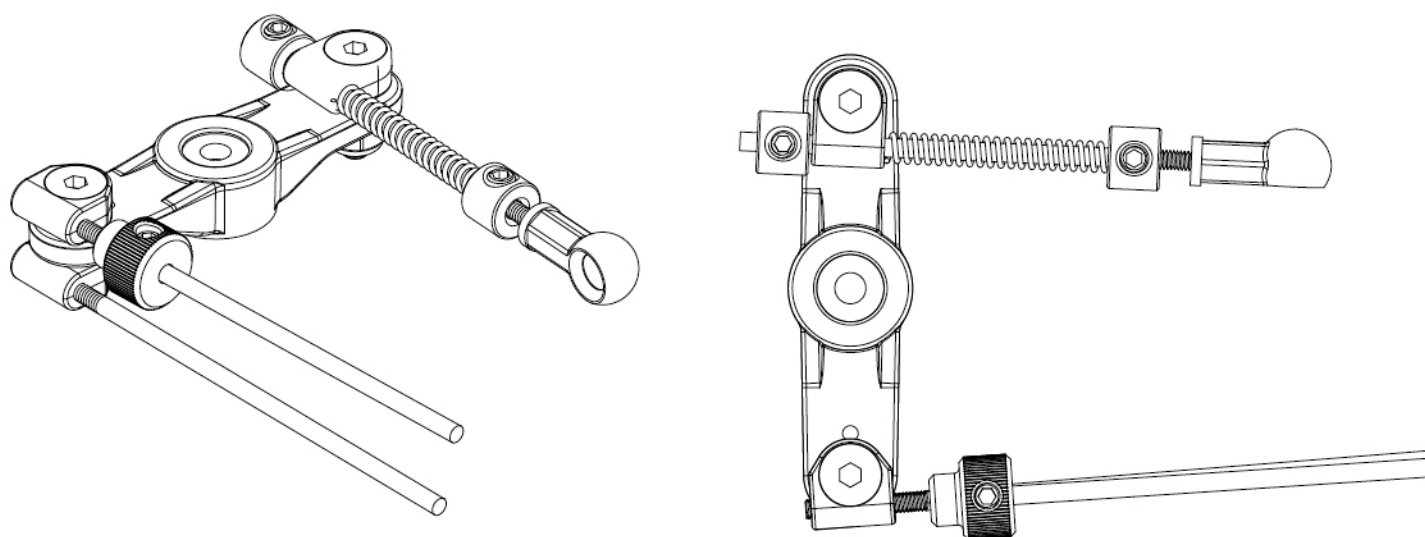
## STEP L - 1

### Throttle/Brake Linkage Assembly



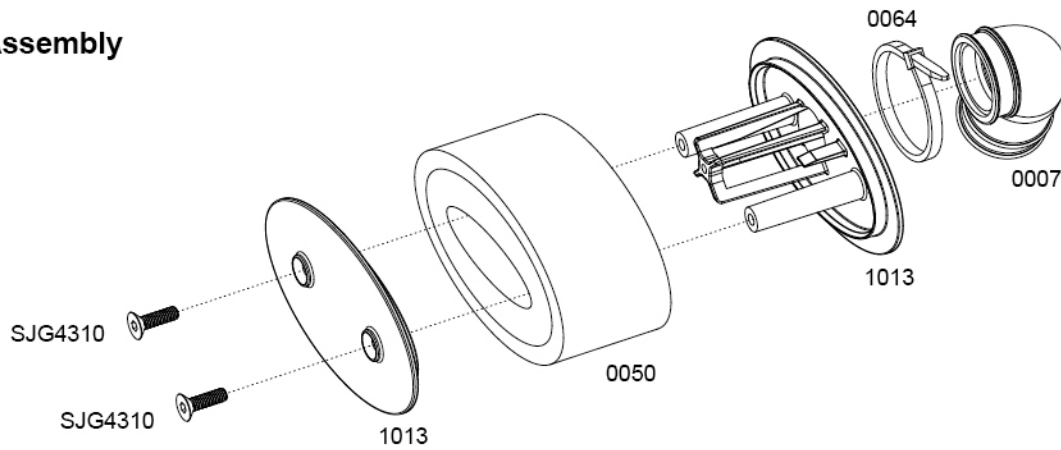
## STEP L - 2

### Completed Throttle/Brake Linkage Assembly



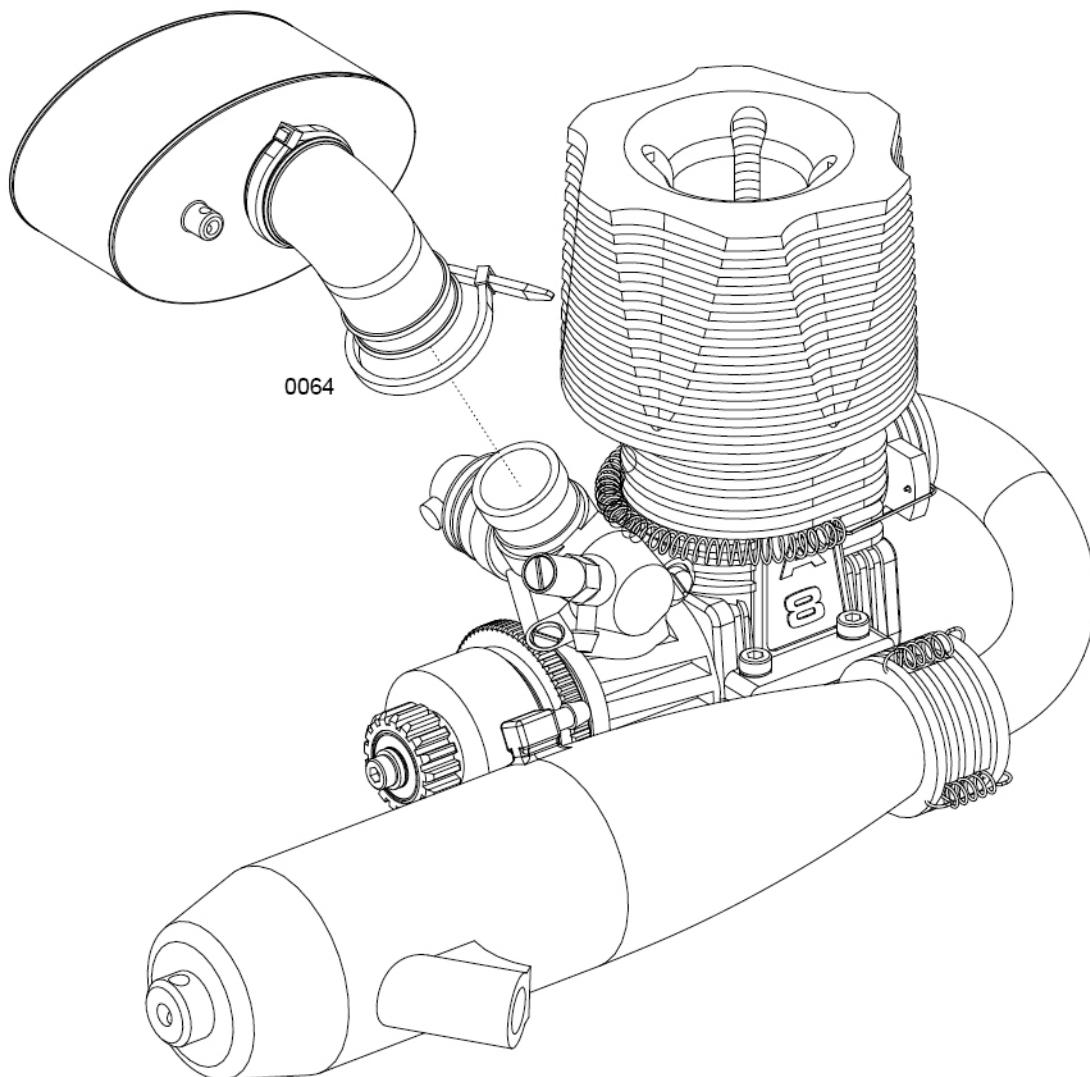
## STEP M - 1

### Air Filter Assembly



## STEP M - 2

### Air Filter Assembly

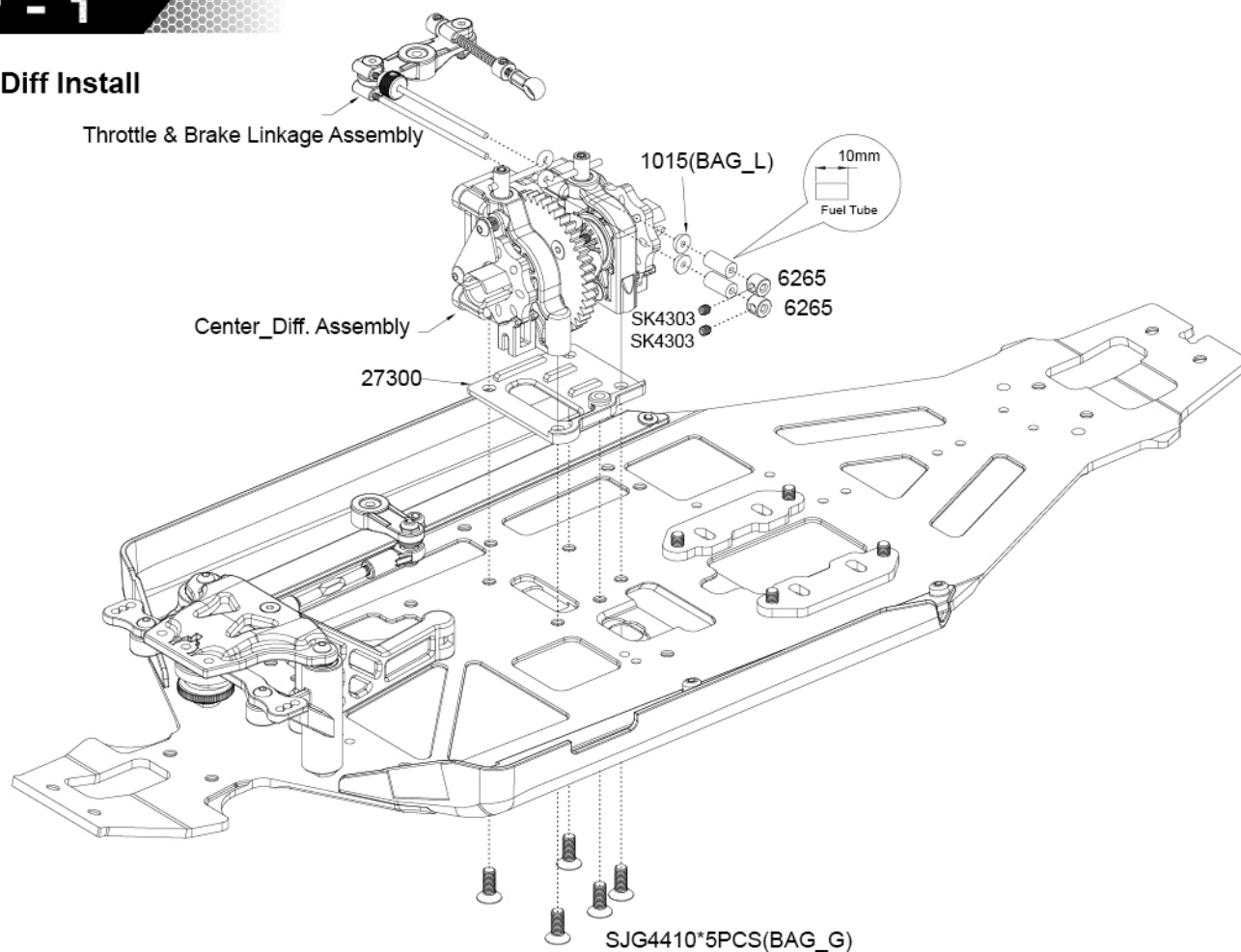




# CHASSIS INSTALL **A215T**

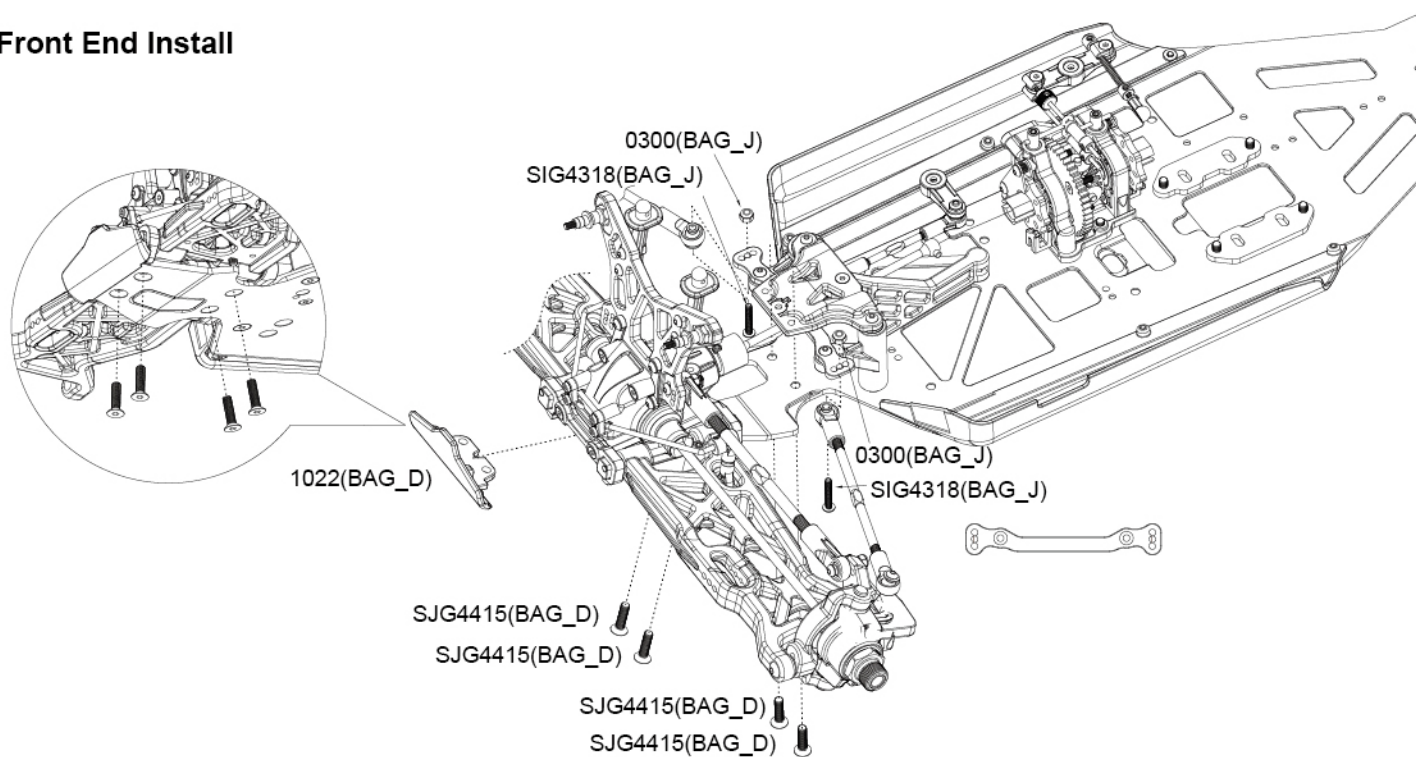
## STEP - 1

### Center Diff Install



## STEP - 2

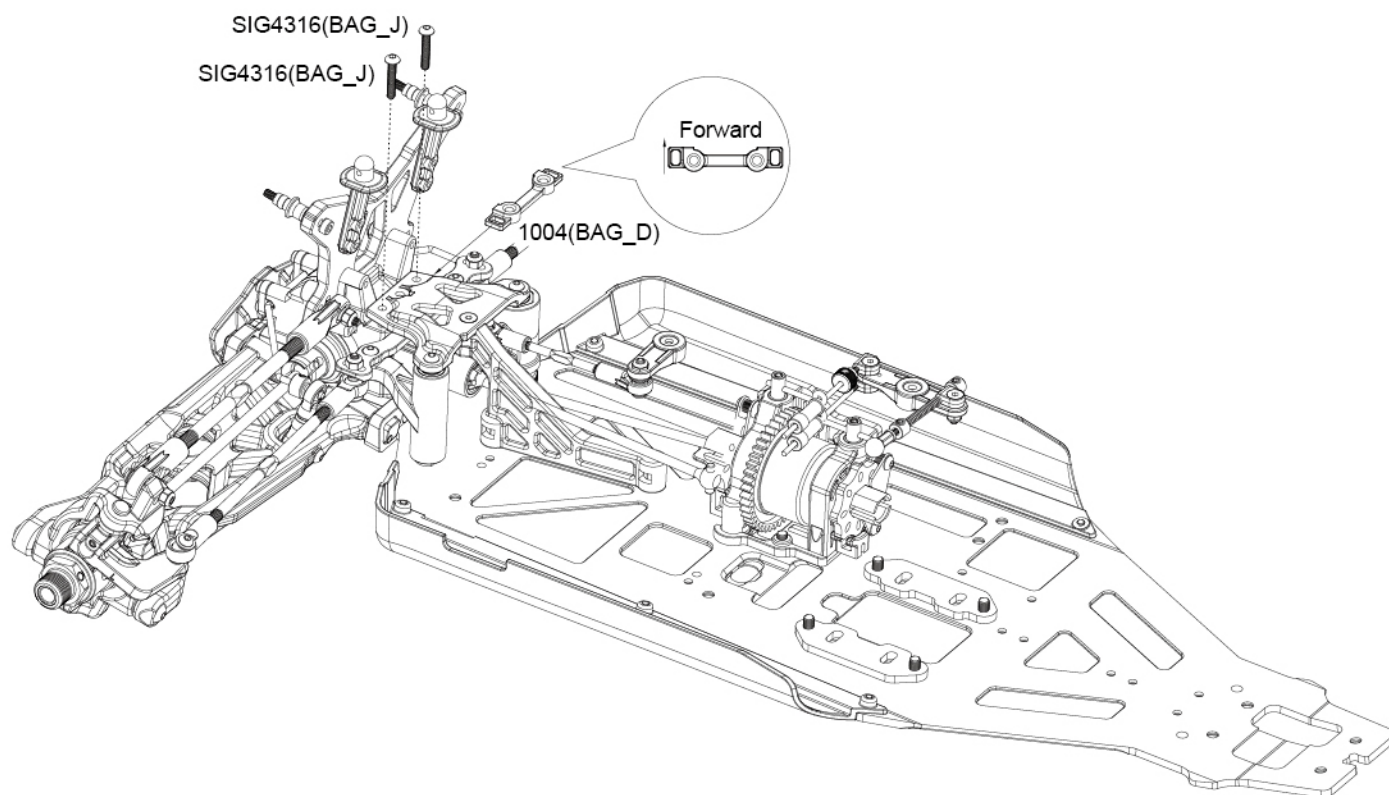
### Front End Install



# CHASSIS INSTALL **A215T**

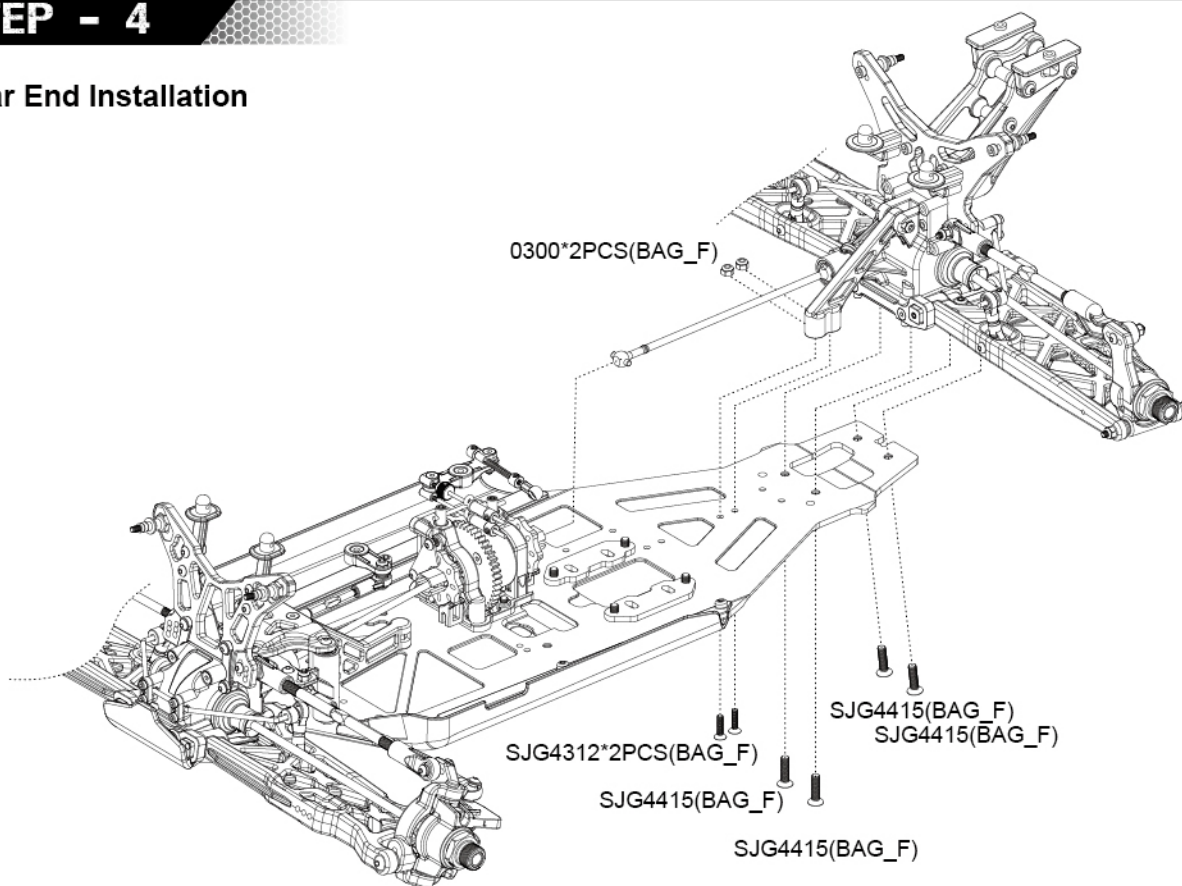
## STEP - 3

### Front End Installation



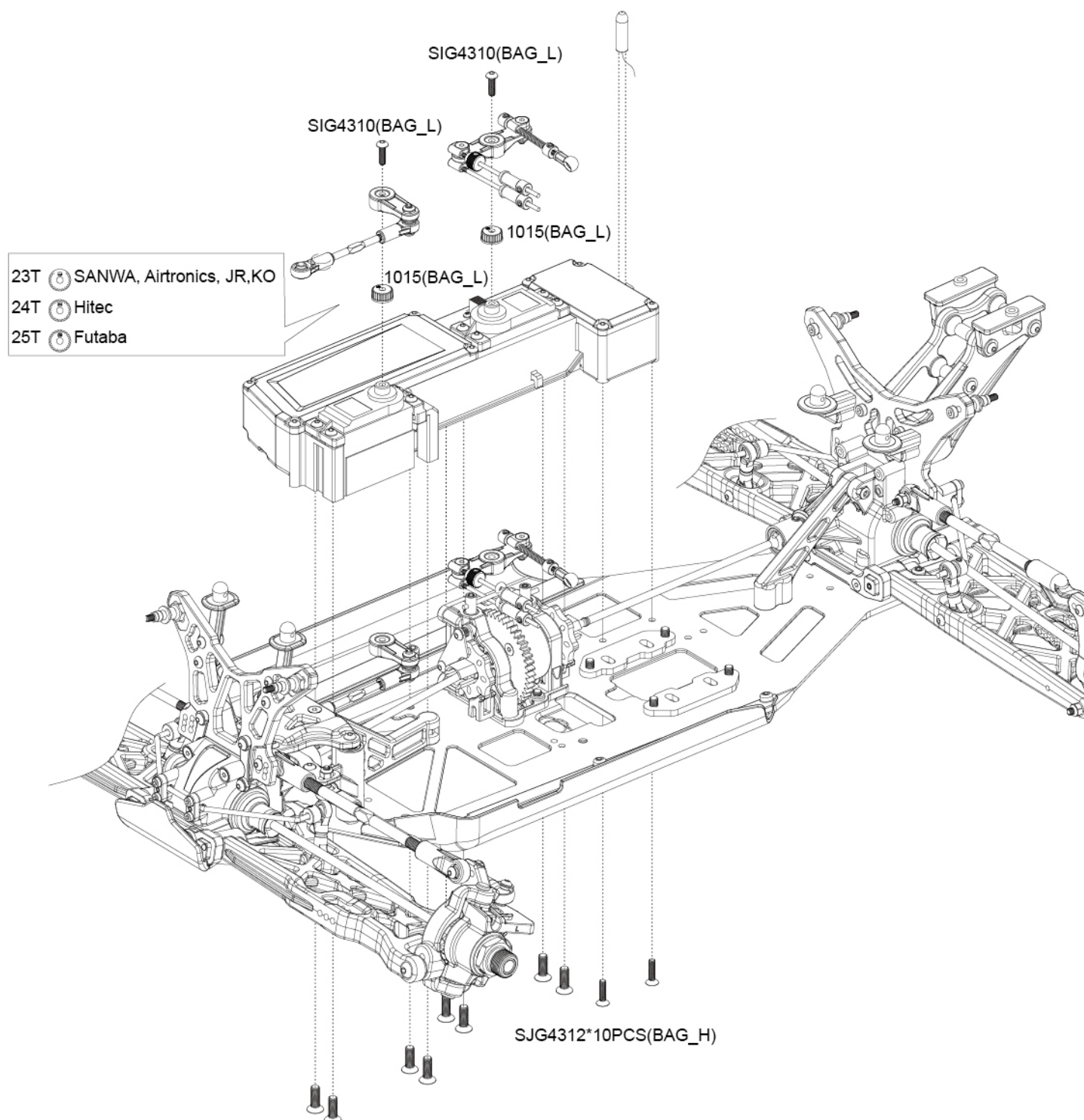
## STEP - 4

### Rear End Installation



## STEP - 5

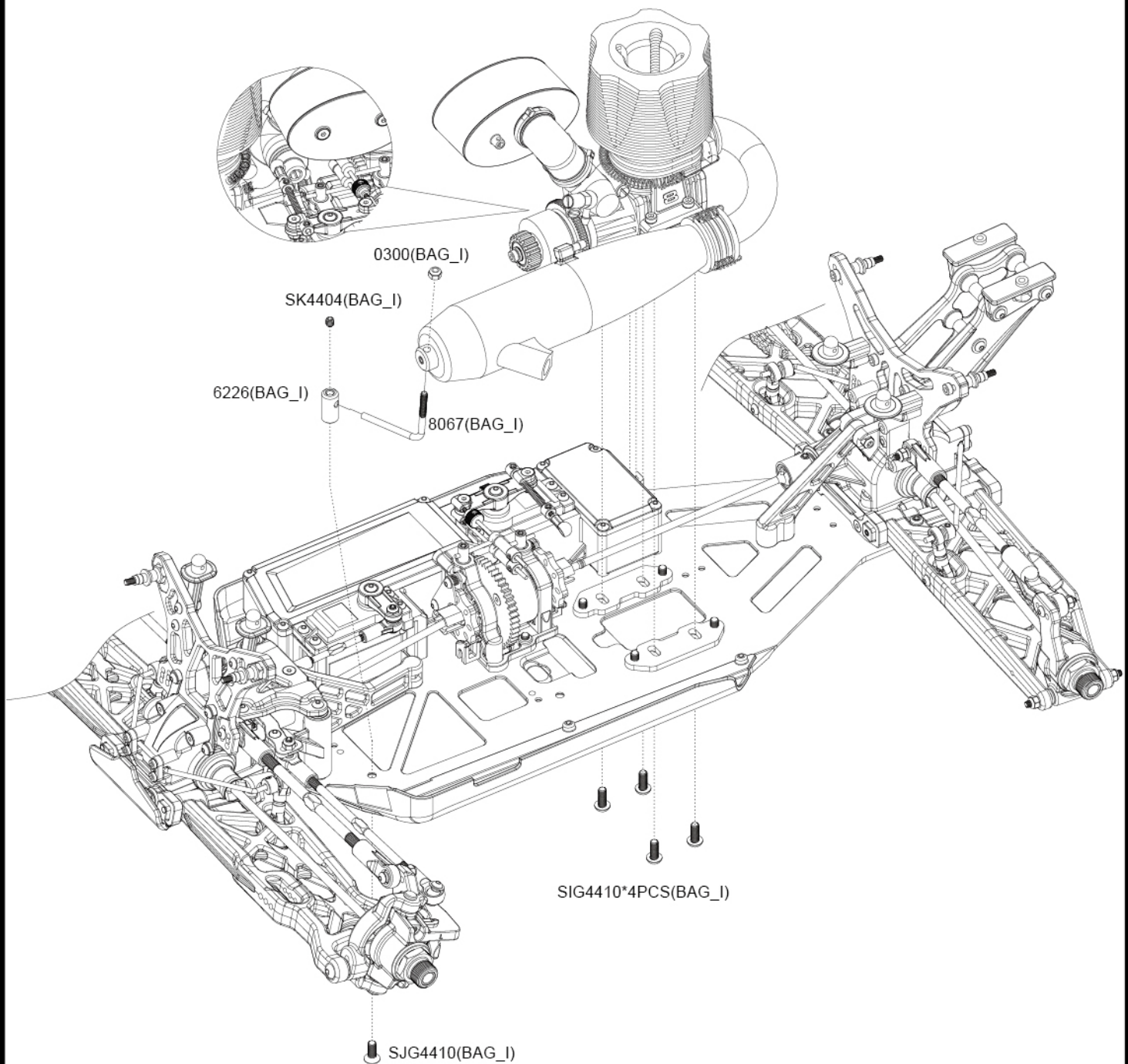
### Radio Tray Install





## STEP - 6

### Engine Set Install

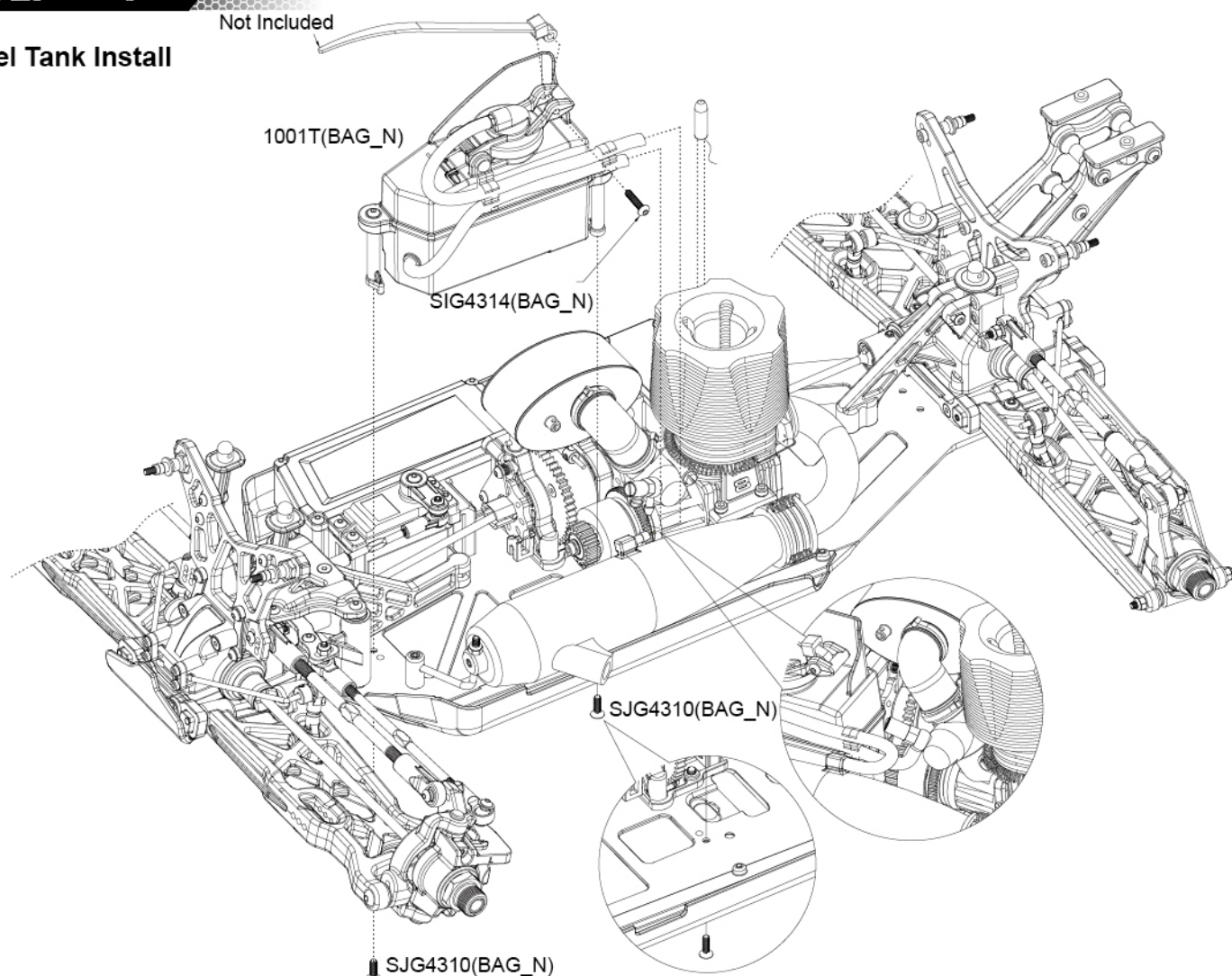




# CHASSIS INSTALL **A215T**

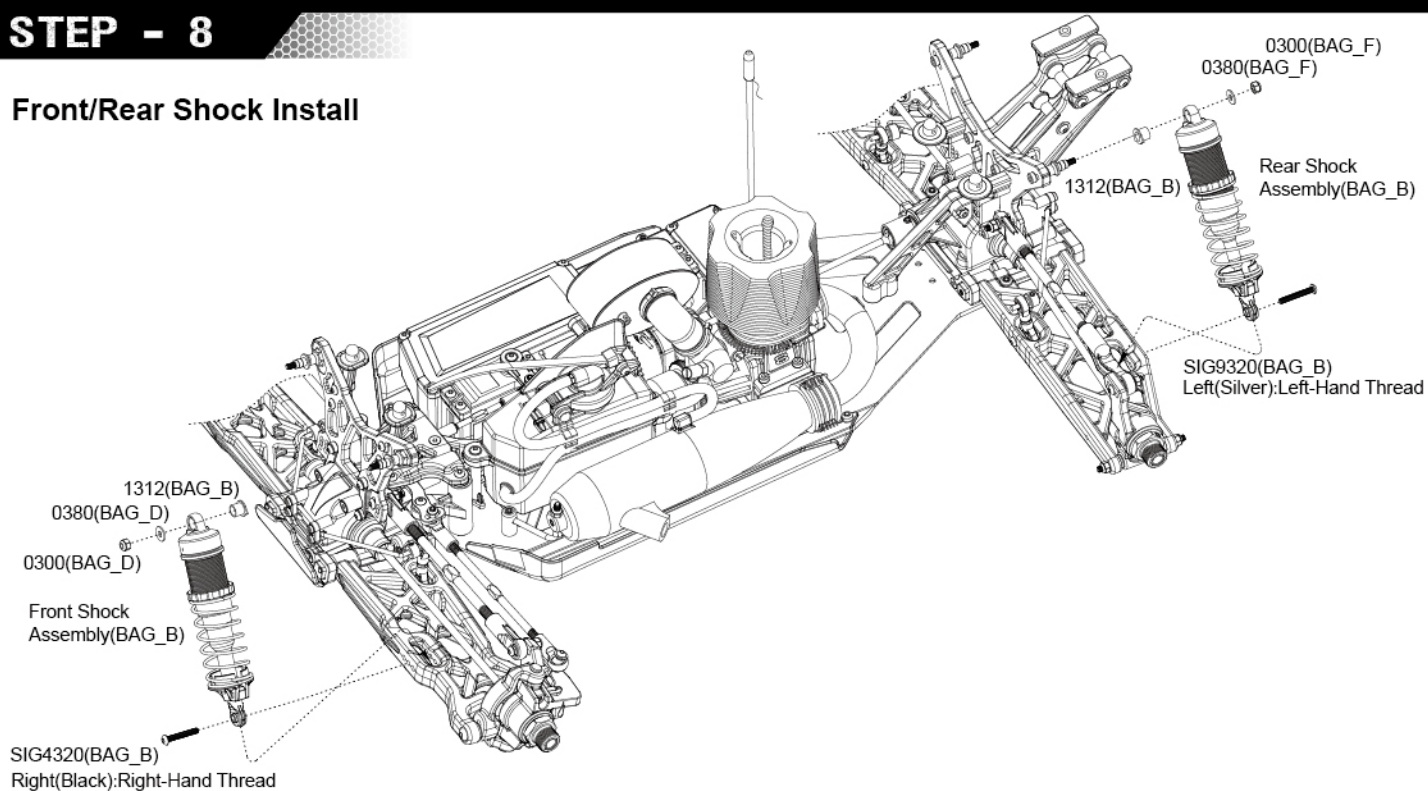
## STEP - 7

### Fuel Tank Install



## STEP - 8

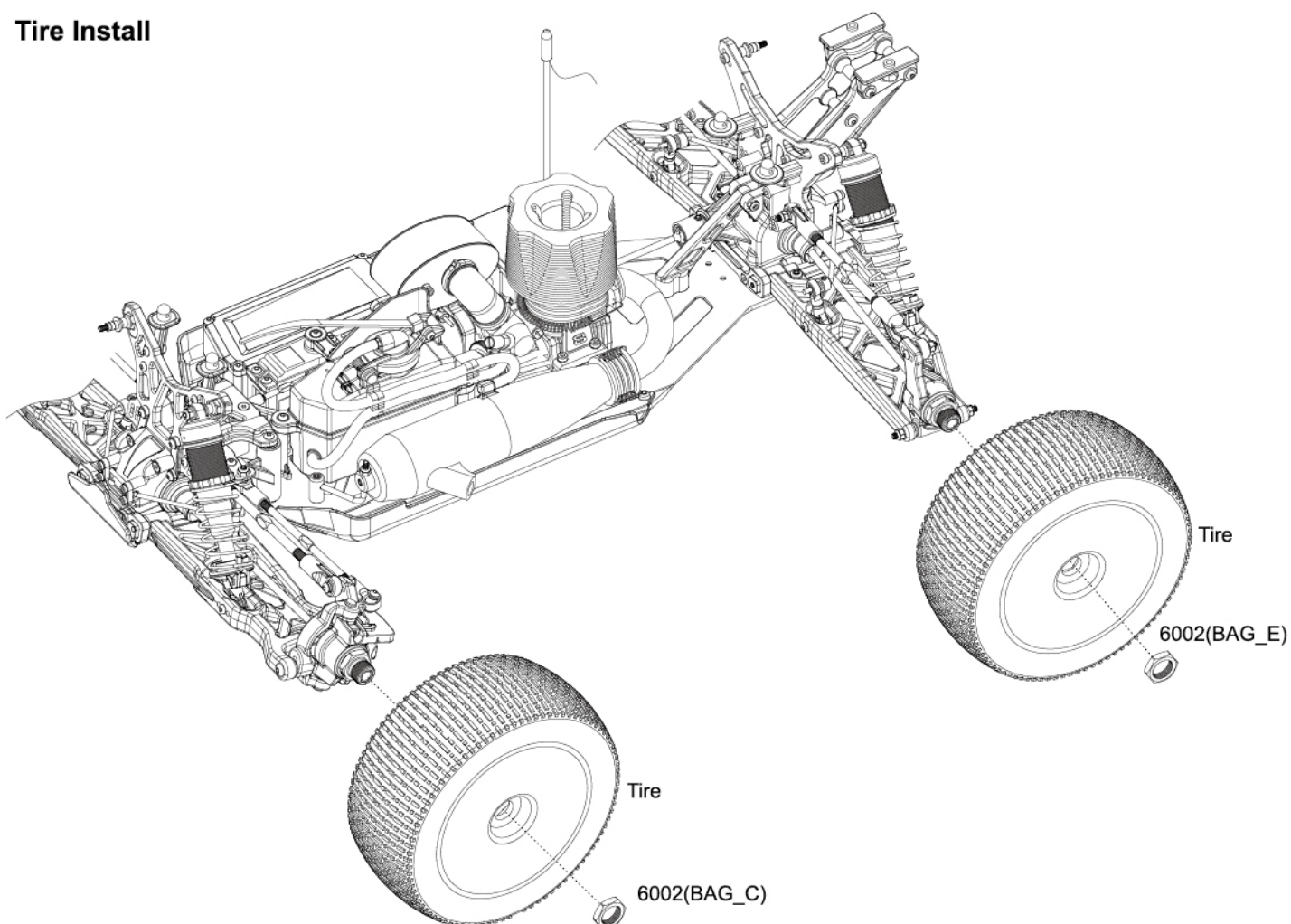
### Front/Rear Shock Install



# CHASSIS INSTALL **A215T**

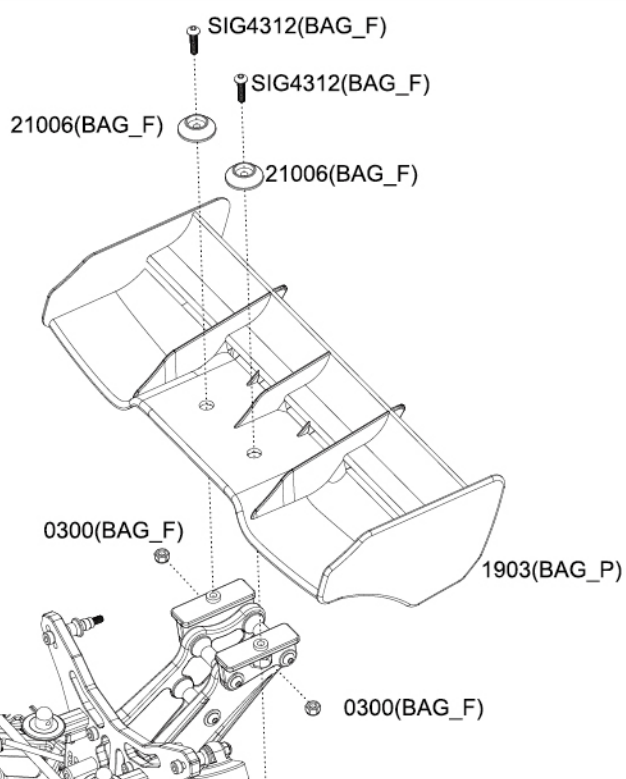
## STEP - 9

### Tire Install



## STEP - 10

### Wing Install

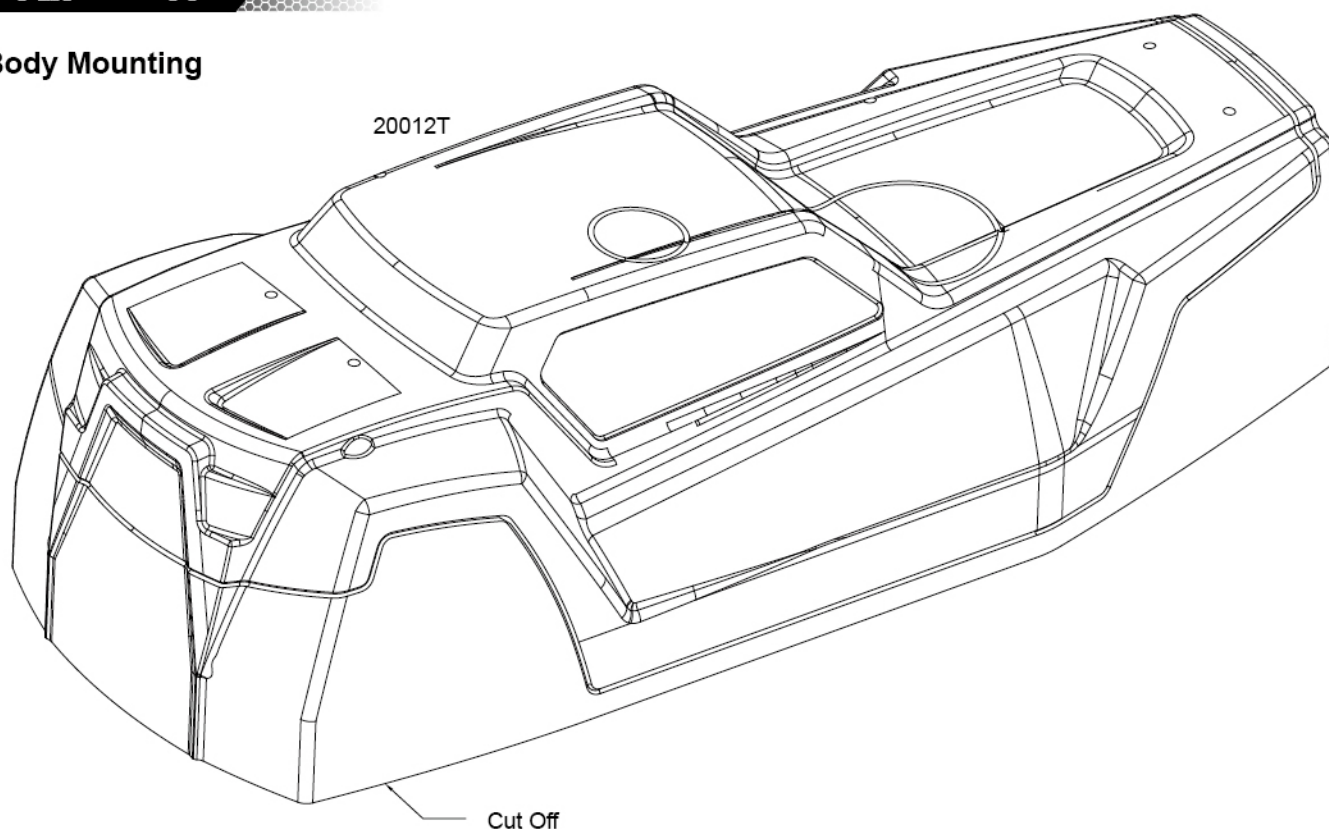




# CHASSIS INSTALL **A215T**

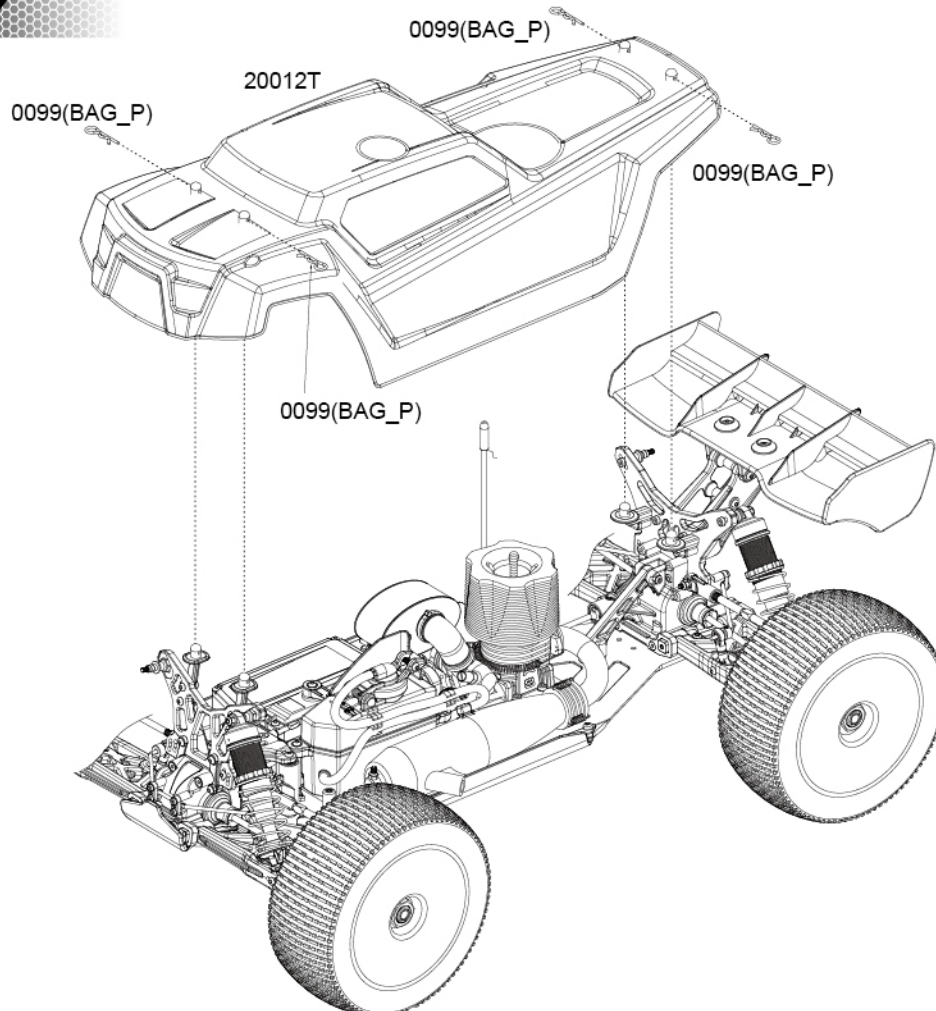
## STEP - 11

### Body Mounting



## STEP - 12

### Body Mounting



## TRACK CONDITIONS

☐ Indoor   ☐ Tight   ☐ Smooth   ☐ Hard Packed   ☐ Blue Groove  
☐ Wet   ☐ Low Bite   ☐ High Bite   ☒ Outdoor   ☐ Open   ☐ Rough   ☐ Loose/Loamy  
☐ Dry   ☐ Dusty   ☒ Wed Bite   ☐ Other

## ENGINE

Gasket

mm

Plug

Muffler

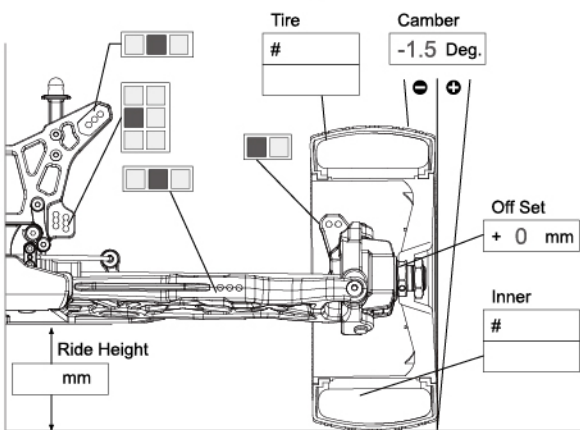
Fuel

Clutch bell ☒ 13T   ☐ 14T   ☐ 15T   ☐ Other T

DIFF Front 7000 Oil # Center 7000 Oil # Rear 3000 Oil #

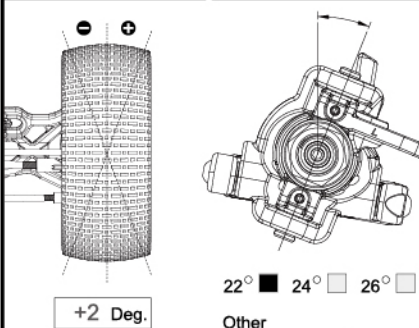
43 T × 10 T Spur gear 49 T 43 T × 10 T

## FRONT SUSPENSION



## FRONT TOE ANGLE

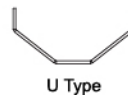
## CASTER ANGLE



## ANTI ROLL BAR

FRONT

#8019 U Type 1.9mm  
 #8021 U Type 2.1mm  
 #8022 U Type 2.2mm  
 #8023 U Type 2.3mm  
 #8024 U Type 2.4mm  
 #8025 U Type 2.5mm  
 others



## KICK UP

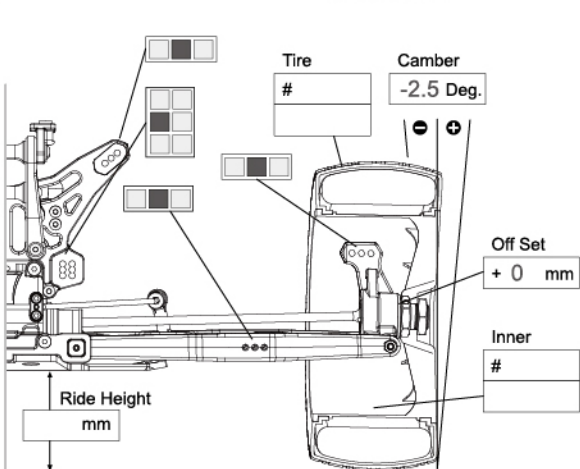


## ANTI SQUAT

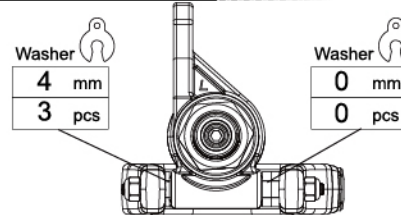
## TOE ANGLE



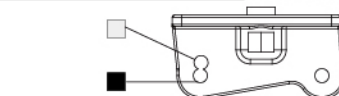
## REAR SUSPENSION



## WHEEL BASE



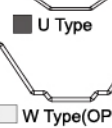
## WING POSITION



## ANTI ROLL BAR

REAR

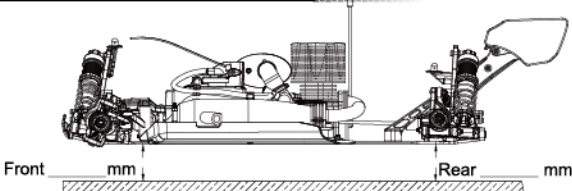
#8322 U Type 2.2mm  
 #8323 U Type 2.3mm  
 #8324 U Type 2.4mm  
 #8325 U Type 2.5mm  
 #8326 W Type 2.6mm  
 #8328 W Type 2.8mm  
 #8330 W Type 3.0mm  
 others 2.8



## ACKERMAN



## RIDE HEIGHT



WING

## FRONT SHOCK

Oil

# 45

PISTON

#0096-0615

6x1.5mm

#0096-0812

8x1.2mm

#0096-0813

8x1.3mm

others

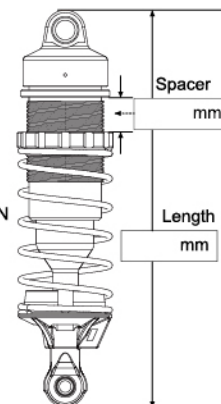
CONE OF PISTON

DOWN

UP

SHOCK SPRINGS

# 9008



## REAR SHOCK

Oil

# 40

PISTON

#0096-0615

6x1.5mm

#0096-0812

8x1.2mm

#0096-0813

8x1.3mm

others

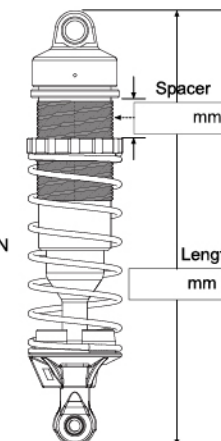
CONE OF PISTON

DOWN

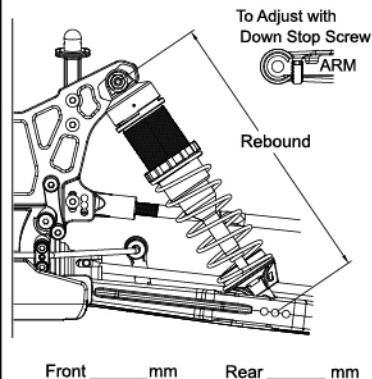
UP

SHOCK SPRINGS

# 9018



## REBOUND





## TRACK CONDITIONS

☐ Indoor    ☐ Tight    ☐ Smooth    ☐ Hard Packed    ☐ Blue Groove  
☐ Wet    ☐ Low Bite    ☐ High Bite    ☐ Outdoor    ☐ Open    ☐ Rough    ☐ Loose/Loamy  
☐ Dry    ☐ Dusty    ☐ Wed Bite    ☐ Other

## ENGINE

Gasket

mm

Plug

Muffler

Fuel

## Clutch bell

☐ 13T

☐ 14T

☐ 15T

☐ Other T

Shoes

☐ 3

☐ 4

Spring

mm

## DIFF

Front

Oil #

Center

Oil #

Rear

Oil #

T

x

T

Spur gear

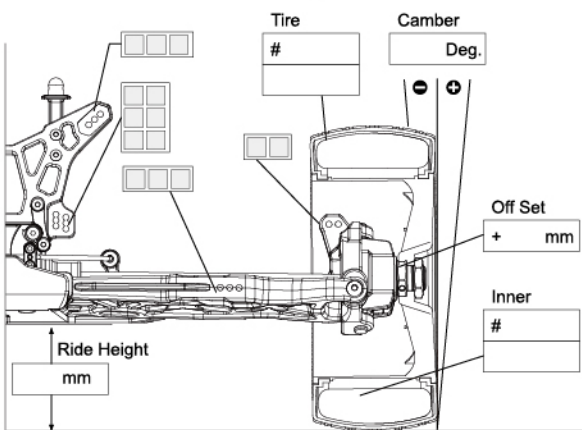
T

T

x

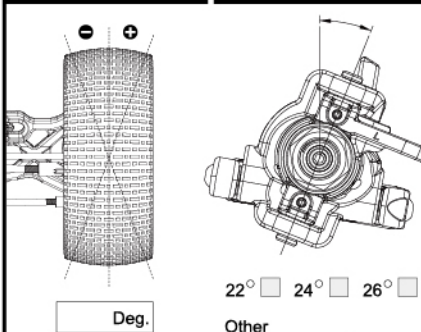
T

## FRONT SUSPENSION



## FRONT TOE ANGLE

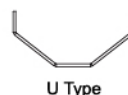
## CASTER ANGLE



## ANTI ROLL BAR

FRONT

#8019 U Type 1.9mm  
#8021 U Type 2.1mm  
#8022 U Type 2.2mm  
#8023 U Type 2.3mm  
#8024 U Type 2.4mm  
#8025 U Type 2.5mm  
others



## KICK UP

FF



FR



## ANTI SQUAT

## TOE ANGLE

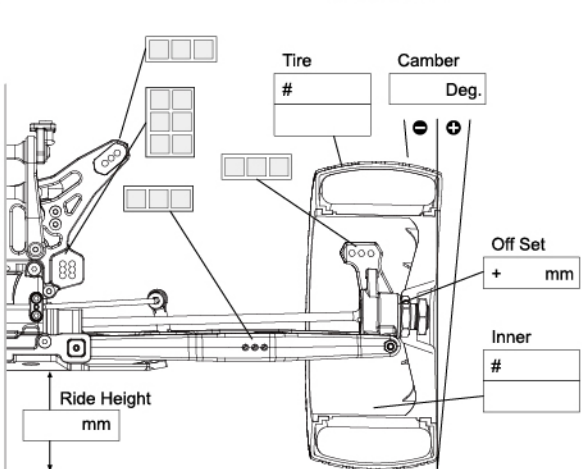
RF



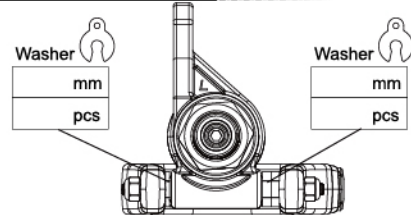
RR



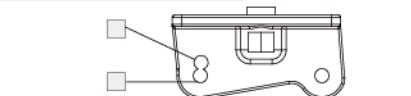
## REAR SUSPENSION



## WHEEL BASE



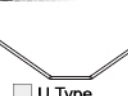
## WING POSITION



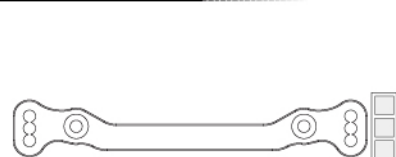
## ANTI ROLL BAR

REAR

#8322 U Type 2.2mm  
#8323 U Type 2.3mm  
#8324 U Type 2.4mm  
#8325 U Type 2.5mm  
#8326 W Type 2.6mm  
#8328 W Type 2.8mm  
#8330 W Type 3.0mm  
others

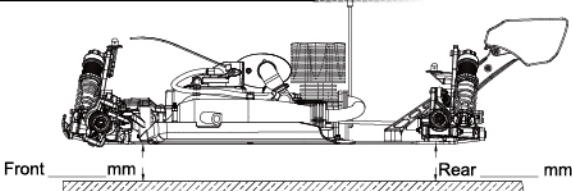


## ACKERMAN



## RIDE HEIGHT

WING



## FRONT SHOCK

Oil

#

## PISTON

#0096-0615

6x1.5mm

#0096-0812

8x1.2mm

#0096-0813

8x1.3mm

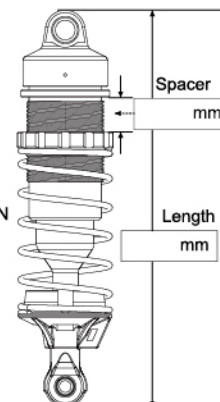
others

## CONE OF PISTON

DOWN

UP

## SHOCK SPRINGS



## REAR SHOCK

Oil

#

## PISTON

#0096-0615

6x1.5mm

#0096-0812

8x1.2mm

#0096-0813

8x1.3mm

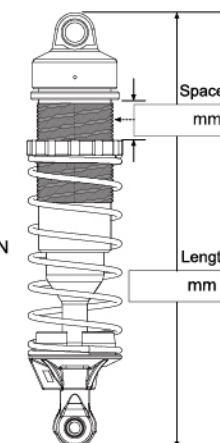
others

## CONE OF PISTON

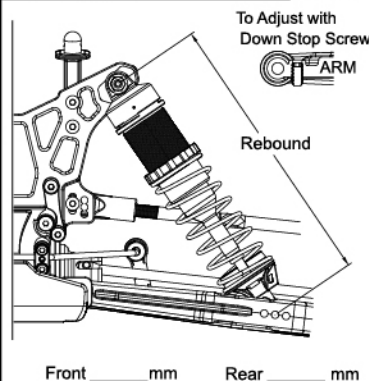
DOWN

UP

## SHOCK SPRINGS

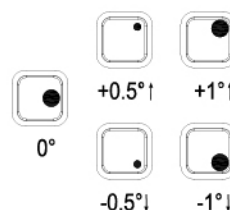
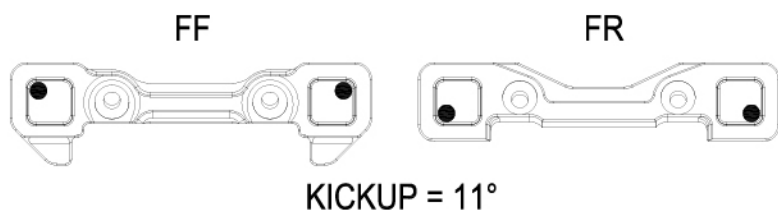


## REBOUND

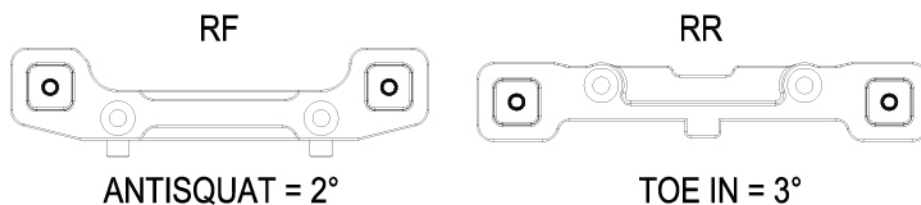


## FRONT END

## FRONT SUSPENSION KICKUP INSERTS CHART

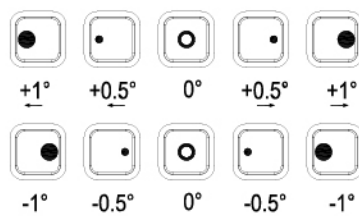
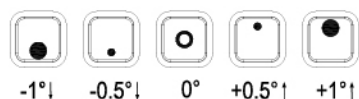


## REAR END



## REAR ANTISQUAT INSERTS CHART

## REAR TOE IN INSERTS CHART



## OTHER SETTING EXAMPOLES

FF	FR	KICKUP = 10°	RF	RR	ANTISQUAT = 2° TOE IN = 4°
		KICKUP = 9.5°			ANTISQUAT = 3° TOE IN = 3.5°
		KICKUP = 9°			ANTISQUAT = 1.5° TOE IN = 2.5°

MEMO





# A215T

 agama

***1/8 SCALE 4WD  
NITRO OFFROAD TRUGGY***

U.J. ENTERPRISE CO., LTD.  
E-mail: [contact@agama-rc.com](mailto:contact@agama-rc.com)